

bsm-60446M**[Primary Antibody]**

BioSS
ANTIBODIES

www.bioss.com.cn

sales@bioss.com.cn

techsupport@bioss.com.cn

400-901-9800

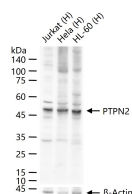
PTPN2 Recombinant Mouse mAb**— DATASHEET —****Host:** Mouse**Isotype:** IgG1, Kappa**Clonality:** Recombinant**CloneNo.:** F3H2**Target:** PTPN2**Purification:** affinity purified by Protein G**Concentration:** 1mg/ml**Storage:** 0.01M TBS (pH7.4) with 1% BSA, 0.02% Proclin300 and 50% Glycerol.

Shipped at 4°C. Store at -20°C for one year. Avoid repeated freeze/thaw cycles.

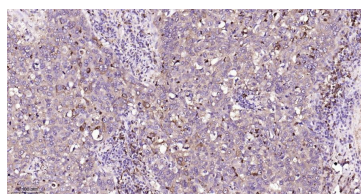
Background: The protein encoded by this gene is a member of the protein tyrosine phosphatase (PTP) family. Members of the PTP family share a highly conserved catalytic motif, which is essential for the catalytic activity. PTPs are known to be signaling molecules that regulate a variety of cellular processes including cell growth, differentiation, mitotic cycle, and oncogenic transformation. Epidermal growth factor receptor and the adaptor protein Shc were reported to be substrates of this PTP, which suggested the roles in growth factor mediated cell signaling. Multiple alternatively spliced transcript variants encoding different isoforms have been found. Two highly related but distinctly processed pseudogenes that localize to chromosomes 1 and 13, respectively, have been reported. [provided by RefSeq, May 2011]

Applications: WB (1:500-2000)**IHC-P** (1:100-500)**IHC-F** (1:100-500)**IF** (1:100-500)**Flow-Cyt** (1:50-100)**Reactivity:** Human, Mouse, Rat

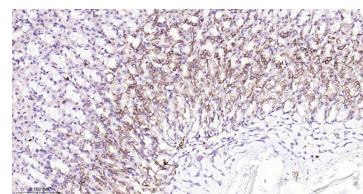
Subcellular Location: Cell membrane ,Cytoplasm
Location: ,Nucleus

— VALIDATION IMAGES —

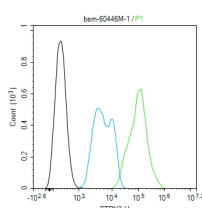
25 ug total protein per lane of various lysates (see on figure) probed with PTPN2 monoclonal antibody, unconjugated (bsm-60446M) at 1:1000 dilution and 4°C overnight incubation. Followed by conjugated secondary antibody incubation at r.t. for 60 min.



Paraformaldehyde-fixed, paraffin embedded Human Breast Cancer; Antigen retrieval by boiling in sodium citrate buffer (pH6.0) for 15 min; Antibody incubation with PTPN2 Monoclonal Antibody, Unconjugated(bsm-60446M) at 1:50 overnight at 4°C, followed by conjugation to the bs-40296G-HRP and DAB (C-0010) staining.



Paraformaldehyde-fixed, paraffin embedded Rat Stomach; Antigen retrieval by boiling in sodium citrate buffer (pH6.0) for 15 min; Antibody incubation with PTPN2 Monoclonal Antibody, Unconjugated(bsm-60446M) at 1:50 overnight at 4°C, followed by conjugation to the bs-40296G-HRP and DAB (C-0010) staining.



The HepG2 (H) cells were fixed with 4% PFA (10 min at r.t.) and then permeabilized with 90% ice-

Important Note: This product as supplied is intended for research use only, not for use in human, therapeutic or diagnostic applications.

cold methanol for 20 min at -20°C, the cells then were incubated in 5%BSA to block non-specific protein-protein interactions (30 min at r.t.). Primary Antibody (green): Mouse Anti-PTPN2 antibody (bsm-60446M, 1:100); Secondary Antibody (white blue): Goat anti-Mouse IgG-FITC (bs-60296G-FITC): 1 µg/test. Blank control (black): PBS. Acquisition of 20,000 events was performed.