

bs-18783R**[Primary Antibody]****Melanoma Inhibitory Activity Rabbit pAb****BioSS**
ANTIBODIES

www.bioss.com.cn

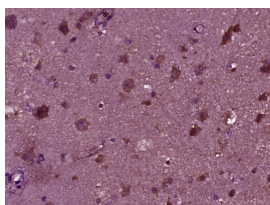
sales@bioss.com.cn

techsupport@bioss.com.cn

400-901-9800

— DATASHEET —

Host: Rabbit	Isotype: IgG	Applications: IHC-P (1:100-500)
Clonality: Polyclonal		IHC-F (1:100-500)
GeneID: 8190	SWISS: Q16674	IF (1:100-500)
Target: Melanoma Inhibitory Activity		Reactivity: Human (predicted: Mouse, Rat, Rabbit, Pig, Sheep, Cow, Horse)
Immunogen: KLH conjugated synthetic peptide derived from human Melanoma Inhibitory Activity: 21-100/131.		
Purification: affinity purified by Protein A		Predicted MW.: 12 kDa
Concentration: 1mg/ml		Subcellular Location: Secreted
Storage: 0.01M TBS (pH7.4) with 1% BSA, 0.02% Proclin300 and 50% Glycerol. Shipped at 4°C. Store at -20°C for one year. Avoid repeated freeze/thaw cycles.		

— VALIDATION IMAGES —

Paraformaldehyde-fixed, paraffin embedded (human brain glioma); Antigen retrieval by boiling in sodium citrate buffer (pH6.0) for 15min; Block endogenous peroxidase by 3% hydrogen peroxide for 20 minutes; Blocking buffer (normal goat serum) at 37°C for 30min; Antibody incubation with (MIA) Polyclonal Antibody, Unconjugated (bs-18783R) at 1:400 overnight at 4°C, followed by operating according to SP Kit(Rabbit) (sp-0023) instructions and DAB staining.