

bsm-60796R**[Primary Antibody]****BioSS**
ANTIBODIES

www.bioss.com.cn

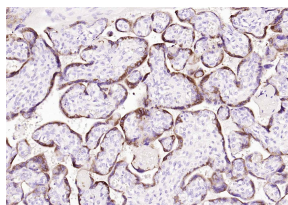
sales@bioss.com.cn

techsupport@bioss.com.cn

400-901-9800

Placental Lactogen Recombinant Rabbit mAb**— DATASHEET —**

Host: Rabbit	Isotype: IgG	Applications: WB (1:500-1000) IHC-P (1:200-1000) IHC-F (1:200-1000) IF (1:200-1000) Reactivity: Human Predicted MW.: 22 kDa Subcellular Location: Secreted
Clonality: Recombinant	CloneNo.: C8D6	
GeneID: 1442	SWISS: P0DML3	
Target: Placental Lactogen		
Purification: affinity purified by Protein A		
Concentration: 1mg/ml		
Storage: PBS, Glycerol, BSA. Shipped at 4°C. Store at -20°C for one year. Avoid repeated freeze/thaw cycles.		
Background: Placental lactogens, also referred to as chorionic somatomammotropin hormones, are protein hormones. They are produced in the mammalian placenta and are similar in structure and function to growth hormones. Together, placental lactogens and growth factors play an essential role to assure successful lactation after pregnancy. Placental lactogens also modify the metabolic state of the mother during pregnancy to supply energy to the fetus. Placental lactogen I is a member of the somatotropin/prolactin family of hormones. The proteins in this family are crucial in mammalian growth control. Placental lactogen I is expressed primarily during mid-pregnancy, and it has been reported that DNA methylation regulates its tissue expression in rats. Placental lactogen II is expressed later in pregnancy and, in mice, its secretion is regulated by the inhibitory control of GH, the concentration of which increases rapidly at the beginning of the last half of pregnancy.		

— VALIDATION IMAGES —

Paraformaldehyde-fixed, paraffin embedded (human placenta); Antigen retrieval by boiling in sodium citrate buffer (pH6.0) for 15min; Block endogenous peroxidase by 3% hydrogen peroxide for 20 minutes; Blocking buffer (normal goat serum) at 37°C for 30min; Incubation with (Placental Lactogen) Monoclonal Antibody, Unconjugated (bsm-60796R) at 1:500 overnight at 4°C, followed by operating according to SP Kit(Rabbit) (sp-0023) instructions and DAB staining.