
c-Met Recombinant Rabbit mAb

Catalog Number: bsm-60793R

Target Protein: c-Met

Concentration: 1mg/ml

Form: Lyophilized or Liquid

Host: Rabbit

Clonality: Recombinant

Clone No.: E8D11

Isotype: IgG

Applications: WB (1:500-2000), IHC-P (1:50-200), IHC-F (1:50-200), IF (1:50-200), Flow-Cyt (1:50-100), ICC/IF (1:50-200)

Reactivity: Human

Predicted MW: 156 kDa

Subcellular: Secreted ,Cell membrane

Locations:

Entrez Gene: 4233

Swiss Prot: P08581

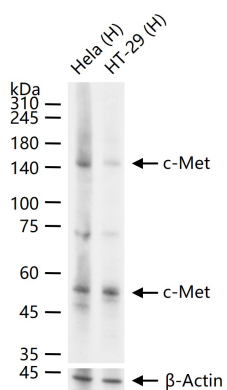
Purification: affinity purified by Protein A

Storage: PBS, Glycerol, BSA.

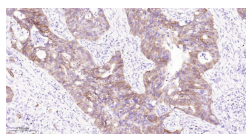
Shipped at 4°C. Store at -20°C for one year. Avoid repeated freeze/thaw cycles.

Background: This gene encodes a member of the receptor tyrosine kinase family of proteins and the product of the proto-oncogene MET. The encoded preproprotein is proteolytically processed to generate alpha and beta subunits that are linked via disulfide bonds to form the mature receptor. Further processing of the beta subunit results in the formation of the M10 peptide, which has been shown to reduce lung fibrosis. Binding of its ligand, hepatocyte growth factor, induces dimerization and activation of the receptor, which plays a role in cellular survival, embryogenesis, and cellular migration and invasion. Mutations in this gene are associated with papillary renal cell carcinoma, hepatocellular carcinoma, and various head and neck cancers. Amplification and overexpression of this gene are also associated with multiple human cancers. [provided by RefSeq, May 2016]

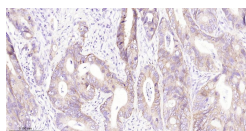
VALIDATION IMAGES



25 ug total protein per lane of various lysates (see on figure) probed with c-Met monoclonal antibody, unconjugated (bsm-60793R) at 1:1000 dilution and 4°C overnight incubation. Followed by conjugated secondary antibody incubation at r.t. for 60 min.



Paraformaldehyde-fixed, paraffin embedded Human Lung Cancer; Antigen retrieval by boiling in sodium citrate buffer (pH6.0) for 15 min; Antibody incubation with c-Met Monoclonal Antibody, Unconjugated(bsm-60793R) at 1:200 overnight at 4°C, followed by conjugation to the bs-0295G-HRP and DAB (C-0010) staining.



Paraformaldehyde-fixed, paraffin embedded Human Colon Cancer; Antigen retrieval by boiling in sodium citrate buffer (pH6.0) for 15 min; Antibody incubation with c-Met Monoclonal Antibody, Unconjugated(bsm-60793R) at 1:200 overnight at 4°C, followed by conjugation to the bs-0295G-HRP and DAB (C-0010) staining.