

bs-2226R**[Primary Antibody]**

Human IgE Rabbit pAb

BioSS
ANTIBODIES

www.bioss.com.cn

sales@bioss.com.cn

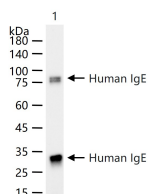
techsupport@bioss.com.cn

400-901-9800

— DATASHEET —

Host: Rabbit	Isotype: IgG	Applications: WB (1:500-2000) Reactivity: Human
Clonality: Polyclonal		
GeneID: Human IgE	SWISS: P01854	
Target: Human IgE		
Purification: affinity purified by Protein A		
Concentration: 1mg/ml		
Storage: 0.01M TBS (pH7.4) with 1% BSA, 0.02% Proclin300 and 50% Glycerol. Shipped at 4°C. Store at -20°C for one year. Avoid repeated freeze/thaw cycles.		
Background: IgE is the least abundant immunoglobulin in plasma, found at a concentration of less than 0.6 micrograms/ml of normal plasma. Elevated IgE levels are found in patients experiencing severe allergic reactions and parasitic infections. In a myeloma condition, IgE is produced by a single clone of plasma cells. The structure of myeloma IgE, however, is normal, and the immunoglobulin purified from a myeloma source is a useful protein for studying immunoglobulin behavior. The affinity purified IgE reacted only with anti IgE and not with anti IgG, IgA, IgM or IgD by immunodiffusion and IEP techniques. Prepared from myeloma plasma shown to be non reactive for HbsAG, anti-HCV, anti-HBc, and negative for anti-HIV 1 & 2 by FDA approved tests.		

— VALIDATION IMAGES —



100 ng Human IgE protein (bs-2226P) per lane probed with Human IgE polyclonal antibody respectively, unconjugated (bs-2226R) at 1:1000 dilution and 4°C overnight incubation. Followed by corresponding conjugated secondary antibody incubation at r.t. for 60 min.