

**bs-21452R****[ Primary Antibody ]****ADRB2 Rabbit pAb****Bioss**  
ANTIBODIES

www.bioss.com.cn

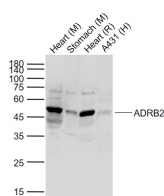
sales@bioss.com.cn

techsupport@bioss.com.cn

400-901-9800

**DATASHEET**

<b>Host:</b> Rabbit	<b>Isotype:</b> IgG	<b>Applications:</b> WB (1:500-2000)
<b>Clonality:</b> Polyclonal		<b>Reactivity:</b> Human, Mouse, Rat (predicted: Sheep, Dog, Horse)
<b>GeneID:</b> 154	<b>SWISS:</b> P07550	<b>Predicted MW.:</b> 46 kDa
<b>Target:</b> ADRB2		<b>Subcellular Location:</b> Cell membrane
<b>Immunogen:</b> KLH conjugated synthetic peptide derived from human ADRB2: 301-400/413. < Cytoplasmic >		
<b>Purification:</b> affinity purified by Protein A		
<b>Concentration:</b> 1mg/ml		
<b>Storage:</b> 0.01M TBS (pH7.4) with 1% BSA, 0.02% Proclin300 and 50% Glycerol. Shipped at 4°C. Store at -20°C for one year. Avoid repeated freeze/thaw cycles.		
<b>Background:</b> Beta 2 Adrenergic Receptor is a member of the G protein coupled receptor superfamily. This receptor is directly associated with one of its ultimate effectors, the class C L type calcium channel Ca(V)1.2. This receptor channel complex also contains a G protein, an adenylyl cyclase, cAMP dependent kinase, and the counterbalancing phosphatase, PP2A. The assembly of the signaling complex provides a mechanism that ensures specific and rapid signaling by this G protein coupled receptor. This gene contains no introns in either its coding or untranslated sequences. Different polymorphic forms, point mutations, and/or downregulation of this gene are associated with nocturnal asthma, obesity and type 2 diabetes. Expression of the beta 2 Adrenergic Receptor has been reported in adipose, blood, brain, heart, lung, nose, pancreas, skeletal muscle, skin, and vessel.		

**VALIDATION IMAGES**

Sample: Lane 1: Heart (Mouse) Lysate at 40 ug  
Lane 2: Stomach (Mouse) Lysate at 40 ug Lane 3:  
Heart (Rat) Lysate at 40 ug Lane 4: A431 (Human)  
Cell Lysate at 30 ug Primary: Anti-ADRB2  
(bs-21452R) at 1/1000 dilution Secondary:  
IRDye800CW Goat Anti-Rabbit IgG at 1/20000  
dilution Predicted band size: 55 kD Observed  
band size: 50 kD

**SELECTED CITATIONS**

- **[IF=5.923]** Gloria Lazzeri. et al. Norepinephrine Protects against Methamphetamine Toxicity through  $\beta$ 2-Adrenergic Receptors Promoting LC3 Compartmentalization. Int J Mol Sci. 2021 Jan;22(13):7232 WB ;Rat. 34281286
- **[IF=3.8]** Yanjie Lu. et al. Chronic stress promotes gastric cancer progression via the adrenoceptor beta 2/PlexinA1 pathway. CELL STRESS CHAPERON. 2024 Feb;29:201 IHC,WB ;Human,Mouse. 38331165