

bs-3028R**[Primary Antibody]****phospho-Amyloid Precursor Protein (Thr668)
Rabbit pAb****Bioss**
ANTIBODIES

www.bioss.com.cn

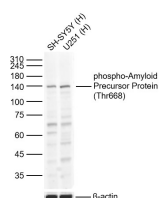
sales@bioss.com.cn

techsupport@bioss.com.cn

400-901-9800

DATASHEET

Host: Rabbit	Isotype: IgG	Applications: WB (1:500-2000)
Clonality: Polyclonal		Reactivity: Human (predicted: Mouse, Rat, Rabbit, Pig, Cow, Chicken, Dog, Horse)
GeneID: 351	SWISS: P05067	Predicted MW.: 3.4-9/83 kDa
Target: Amyloid Precursor Protein (Thr668)		Subcellular Location: Cell membrane
Immunogen: KLH conjugated Synthesised phosphopeptide derived from human APP around the phosphorylation site of Thr668: AV(p-T)PE. < Extracellular >		
Purification: affinity purified by Protein A		
Concentration: 1mg/ml		
Storage: 0.01M TBS (pH7.4) with 1% BSA, 0.02% Proclin300 and 50% Glycerol. Shipped at 4°C. Store at -20°C for one year. Avoid repeated freeze/thaw cycles.		
Background: The cerebral and vascular plaques associated with Alzheimer's disease are mainly composed of Amyloid beta peptides. beta Amyloid is derived from cleavage of the Amyloid precursor protein and varies in length from 39 to 43 amino acids. beta Amyloid [1-40], beta Amyloid [1-42], and beta Amyloid [1-43] peptides result from cleavage of Amyloid precursor protein after residues 40, 42, and 43, respectively. The cleavage takes place by gamma-secretase during the last Amyloid precursor protein processing step. beta Amyloid [1-40], beta Amyloid [1-42], and beta Amyloid [1-43] peptides are major constituents of the plaques and tangles that occur in Alzheimer's disease. beta Amyloid antibodies and peptides have been developed as tools for elucidating the biology of Alzheimer's disease.		

VALIDATION IMAGES

Sample: Lane 1: Human SH-SY5Y cell Lysates
Lane 2: Human U251 cell Lysates Primary: Anti-phospho-Amyloid Precursor Protein (Thr668) (bs-3028R) at 1/1000 dilution Secondary: IRDye800CW Goat Anti-Rabbit IgG at 1/20000 dilution Predicted band size: 3.4-9/83kDa
Observed band size: 130kDa