

bs-25688R

[Primary Antibody]

CD28 Rabbit pAb

BioSS
ANTIBODIES

www.bioss.com.cn

sales@bioss.com.cn

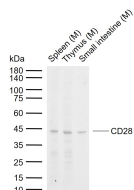
techsupport@bioss.com.cn

400-901-9800

— DATASHEET —

| | | |
|--|----------------------|--|
| Host: Rabbit | Isotype: IgG | Applications: WB (1:500-2000) |
| Clonality: Polyclonal | | Reactivity: Mouse (predicted: Human, Rat, Rabbit, Pig, Sheep, Cow, Horse) |
| GeneID: 12487 | SWISS: P31041 | |
| Target: CD28 | | Predicted MW.: 25 kDa |
| Immunogen: KLH conjugated synthetic peptide derived from mouse CD28: 151-218/218. | | Subcellular Location: Cell membrane |
| Purification: affinity purified by Protein A | | |
| Concentration: 1mg/ml | | |
| Storage: 0.01M TBS (pH7.4) with 1% BSA, 0.02% Proclin300 and 50% Glycerol. Shipped at 4°C. Store at -20°C for one year. Avoid repeated freeze/thaw cycles. | | |
| Background: The protein encoded by this gene is essential for T-cell proliferation and survival, cytokine production, and T-helper type-2 development. Several alternatively spliced transcript variants encoding different isoforms have been found for this gene.[provided by RefSeq, Jul 2011] | | |

— VALIDATION IMAGES —



Sample: Lane 1: Mouse Spleen tissue lysates
Lane 2: Mouse Thymus tissue lysates Lane 3:
Mouse Small intestine tissue lysates Primary:
Anti-CD28 (bs-25688R) at 1/1000 dilution
Secondary: IRDye800CW Goat Anti-Rabbit IgG at
1/20000 dilution Predicted band size: 25 kDa
Observed band size: 44 kDa