

bs-43598R**[Primary Antibody]****PEPT1 Rabbit pAb****BioSS**
ANTIBODIES

www.bioss.com.cn

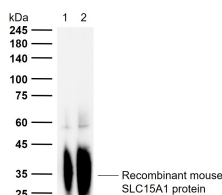
sales@bioss.com.cn

techsupport@bioss.com.cn

400-901-9800

— DATASHEET —**Host:** Rabbit**Isotype:** IgG**Applications:** WB (1:500-2000)**Clonality:** Polyclonal**Reactivity:** Mouse (predicted: Rat)**Target:** PEPT1**Purification:** affinity purified by Protein A**Concentration:** 1mg/ml**Storage:** 0.01M TBS (pH7.4) with 1% BSA, 0.02% Proclin300 and 50% Glycerol.

Shipped at 4°C. Store at -20°C for one year. Avoid repeated freeze/thaw cycles.

**Predicted
MW.:** 79 kDa**Subcellular
Location:** Cell membrane**Background:** PEPT1(Oligopeptide transporter, small intestine isoform (Peptide transporter 1) (Intestinal H(+)/peptide cotransporter) (Solute carrier family 15 member 1) Proton-coupled intake of oligopeptides of 2 to 4 amino acids with a preference for dipeptides. May constitute a major route for the absorption of protein digestion end-products. Subcellular Location: membrane; Multi-pass membrane protein. Tissue Specificity Intestine, kidney, liver and low in brain. Belongs to the PTR2/POT transporter (TC 2.A.17) family.**— VALIDATION IMAGES —**

Sample: Lane 1: Recombinant mouse SLC15A1 protein, C-His(bs-43598P-50ng) Lane 2: Recombinant mouse SLC15A1 protein, C-His(bs-43598P-200ng) Primary: Anti-PEPT1 (bs-43598R) at 1/1000 dilution Secondary: IRDye800CW Goat Anti-Rabbit IgG at 1/20000 dilution Predicted band size: 79 kDa Observed band size: 34 kDa