

bsm-60789R**[Primary Antibody]**

Bioss
ANTIBODIES

www.bioss.com.cn

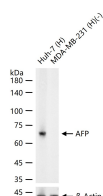
sales@bioss.com.cn

techsupport@bioss.com.cn

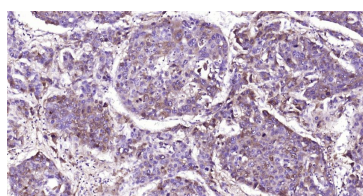
400-901-9800

AFP Recombinant Rabbit mAb**DATASHEET**

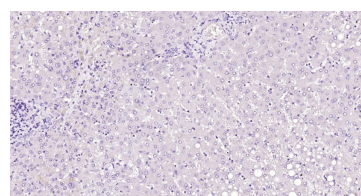
Host: Rabbit	Isotype: IgG	Applications: WB (1:500-5000) IHC-P (1:100-500) IHC-F (1:100-500) IF (1:100-500)
Clonality: Recombinant	CloneNo.: A5H7	
GeneID: 174	SWISS: P02771	
Target: AFP		
Immunogen: A synthesized peptide derived from human alpha Fetoprotein: 1-609/609.		
Purification: affinity purified by Protein A		Reactivity: Human
Concentration: 1mg/ml		Predicted MW.: 65 kDa Subcellular Location: Secreted
Storage: PBS, Glycerol, BSA. Shipped at 4°C. Store at -20°C for one year. Avoid repeated freeze/thaw cycles.		
Background: Alpha 1 Fetoprotein is a major plasma protein produced by the yolk sac and the liver during fetal life. Alpha fetoprotein expression in adults is often associated with hepatoma or teratoma. However, hereditary persistence of alpha-fetoprotein may also be found in individuals with no obvious pathology. The protein is thought to be the fetal counterpart of serum albumin, and the alpha fetoprotein and albumin genes are present in tandem in the same transcriptional orientation on chromosome 4. Alpha fetoprotein is found in monomeric as well as dimeric and trimeric forms, and binds copper, nickel, fatty acids and bilirubin. The level of alpha fetoprotein in amniotic fluid is used to measure renal loss of protein to screen for spina bifida and anencephaly. Expression has been documented in human adrenal, liver, ovary, testis, and pancreas. ESTs have been isolated from normal human brain, liver/spleen, embryo and uterus tissue libraries.		

VALIDATION IMAGES

25 ug total protein per lane of various lysates (see on figure) probed with AFP monoclonal antibody, unconjugated (bsm-60789R) at 1:3000 dilution and 4°C overnight incubation. Followed by conjugated secondary antibody incubation at r.t. for 60 min.



Paraformaldehyde-fixed, paraffin embedded Human Liver Cancer; Antigen retrieval by boiling in sodium citrate buffer (pH6.0) for 15 min; Antibody incubation with AFP Monoclonal Antibody, Unconjugated (bsm-60789R) at 1:800 overnight at 4°C, followed by conjugation to the SP Kit (Rabbit, SP-0023) and DAB (C-0010) staining.



(Negative control) Paraformaldehyde-fixed, paraffin embedded Human Liver; Antigen retrieval by boiling in sodium citrate buffer (pH6.0) for 15 min; Antibody incubation with AFP Monoclonal Antibody, Unconjugated (bsm-60789R) at 1:800 overnight at 4°C, followed by conjugation to the SP Kit (Rabbit, SP-0023) and DAB (C-0010) staining.

SELECTED CITATIONS

- **[IF=8.5]** Zihong Li. et al. Fatty acid desaturase 2 (FADS2) affects the pluripotency of hESCs by regulating energy metabolism. INT J BIOL MACROMOL. 2025 Mar;295:139449 IF, WB ; Human. 39756764