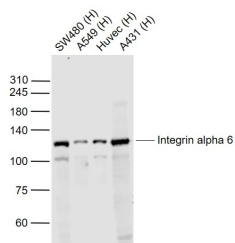
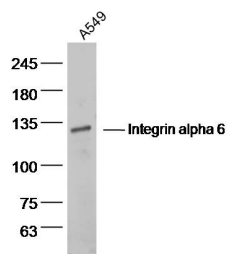

Integrin alpha 6 Rabbit pAb

Catalog Number: bs-2641R
Target Protein: Integrin alpha 6
Concentration: 1mg/ml
Form: Liquid
Host: Rabbit
Clonality: Polyclonal
Isotype: IgG
Applications: WB (1:500-2000)
Reactivity: Human (predicted:Mouse, Rat, Cow, Chicken)
Predicted MW: 21/124 kDa
Detected MW: 120 kDa
Entrez Gene: 3655
Swiss Prot: P23229
Source: KLH conjugated synthetic peptide derived from human Integrin alpha 6: 1031-1130/1130.
Purification: affinity purified by Protein A
Storage: 0.01M TBS (pH7.4) with 1% BSA, 0.02% Proclin300 and 50% Glycerol.
Shipped at 4°C. Store at -20°C for one year. Avoid repeated freeze/thaw cycles.
Background: The gene encodes a member of the integrin alpha chain family of proteins. Integrins are heterodimeric integral membrane proteins composed of an alpha chain and a beta chain that function in cell surface adhesion and signaling. The encoded preproprotein is proteolytically processed to generate light and heavy chains that comprise the alpha 6 subunit. This subunit may associate with a beta 1 or beta 4 subunit to form an integrin that interacts with extracellular matrix proteins including members of the laminin family. The alpha 6 beta 4 integrin may promote tumorigenesis, while the alpha 6 beta 1 integrin may negatively regulate erbB2/HER2 signaling. Alternative splicing results in multiple transcript variants. [provided by RefSeq, Oct 2015]

VALIDATION IMAGES



Sample: Lane 1: SW480 (Human) Cell Lysate at 30 ug Lane 2: A549 (Human) Cell Lysate at 30 ug Lane 3: Huvec (Human) Cell Lysate at 30 ug Lane 4: A431 (Human) Cell Lysate at 30 ug Primary: Anti-Integrin alpha 6 (bs-2641R) at 1/1000 dilution Secondary: IRDye800CW Goat Anti-Rabbit IgG at 1/20000 dilution Predicted band size: 120 kD Observed band size: 115 kD



Sample: A549 Cell (Human) Lysate at 40 ug Primary: Anti-Integrin alpha 6 (bs-2641R) at 1/300 dilution Secondary: IRDye800CW Goat Anti-Rabbit IgG at 1/20000 dilution Predicted band size: 21/124 kD Observed band size: 130 kD

PRODUCT SPECIFIC PUBLICATIONS

[IF=17.694] Bae, Eunnyung, et al. Integrin $\alpha 3\beta 1$ promotes vessel formation of glioblastoma-associated endothelial cells through calcium-mediated macropinocytosis and lysosomal exocytosis. NAT COMMUN. 2022 Jul;13(1):1-15 IF ; Mouse . 35879332

[IF=6.217] Wang L et al. Zoledronic acid inhibits the growth of cancer stem cell derived from cervical cancer cell by attenuating their stemness phenotype and inducing apoptosis and cell cycle arrest through the Erk1/2 and Akt pathways. J Exp Clin Cancer Res. 2019 Feb 21;38(1):93. IF, WB ; Human&Mouse . 30791957

[IF=3.26] Niu, Zhiwei, et al. "Ras/ERK1/2 pathway regulates the self-renewal of dairy goat spermatogonia stem cells." Reproduction 149.5 (2015): 445-452. Other ; ="Goat" . 25820901

[IF=3.12] Zheng, Liming, et al. "CD49f promotes proliferation of male dairy goat germline stem cells." Cell Proliferation (2016). WB ; ="Goat" . 26841372

[IF=2.81] Torkamani, N., et al. "Epidermal Cells Expressing Putative Cell Markers in Nonglabrous Skin Existing in Direct Proximity with the Distal End of the Arrector Pili Muscle." Stem Cells International 2016 (2016). IHC ; ="Mouse" . 27375744