

**bs-2594R****[ Primary Antibody ]****BioSS**  
ANTIBODIES

www.bioss.com.cn

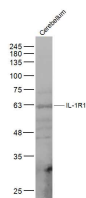
sales@bioss.com.cn

techsupport@bioss.com.cn

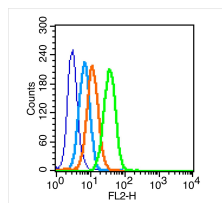
400-901-9800

**IL-1R1 Rabbit pAb****— DATASHEET —**

<b>Host:</b> Rabbit <b>Clonality:</b> Polyclonal <b>Target:</b> IL-1R1 <b>Immunogen:</b> KLH conjugated synthetic peptide derived from human IL-1R1: 481-569/569. <b>Purification:</b> affinity purified by Protein A <b>Concentration:</b> 1mg/ml <b>Storage:</b> 0.01M TBS (pH7.4) with 1% BSA, 0.02% Proclin300 and 50% Glycerol. Shipped at 4°C. Store at -20°C for one year. Avoid repeated freeze/thaw cycles. <b>Background:</b> The protein encoded by this gene is a cytokine receptor that belongs to the interleukin 1 receptor family. This protein is a receptor for interleukin alpha (IL1A), interleukin beta (IL1B), and interleukin 1 receptor, type I(IL1R1/IL1RA). It is an important mediator involved in many cytokine induced immune and inflammatory responses. This gene along with interleukin 1 receptor, type II(IL1R2), interleukin 1 receptor-like 2 (IL1RL2), and interleukin 1 receptor-like 1 (IL1RL1) form a cytokine receptor gene cluster in a region mapped to chromosome 2q12. [provided by RefSeq].	<b>Isotype:</b> IgG <b>GenelD:</b> 3554	<b>Applications:</b> <b>WB</b> (1:500-2000) <b>Flow-Cyt</b> (1µg /test)  <b>Reactivity:</b> Human, Mouse (predicted: Rat)  <b>Predicted MW:</b> 63 kDa  <b>Subcellular Location:</b> Secreted ,Cell membrane
--	--	--

**— VALIDATION IMAGES —**

Sample: Cerebellum (Mouse) Lysate at 40 ug  
Primary: Anti-IL-1R1 (bs-2594R) at 1/300 dilution  
Secondary: IRDye800CW Goat Anti-Rabbit IgG at 1/20000 dilution Predicted band size: 63 kD  
Observed band size: 63 kD



Blank control (blue line): MCF7 (blue). Primary Antibody (green line): Rabbit Anti-IL-1R1 antibody (bs-2594R); Dilution: 1µg /10<sup>6</sup> cells; Isotype Control Antibody (orange line): Rabbit IgG . Secondary Antibody (white blue line): Goat anti-rabbit IgG-PE; Dilution: 1µg /test. Protocol The cells were fixed with 70% methanol overnight at 4°C . Cells stained with Primary Antibody for 30 min at room temperature. The cells were then incubated in 1 X PBS/2%BSA/10% goat serum to block non-specific protein-protein interactions followed by the antibody for 15 min at room temperature. The secondary antibody used for 40 min at room temperature. Acquisition of 20,000 events was performed.

**— SELECTED CITATIONS —**

- **[IF=6.025]** Xuliang Zhang. et al. PINK1/Parkin-mediated mitophagy mitigates T-2 toxin-induced nephrotoxicity. FOOD CHEM TOXICOL. 2022 Jun;164:113078 WB ;Mouse. 35489469
- **[IF=5.682]** Pan, Jingrui. et al. Transmission of NLRP3-IL-1β Signals in Cerebral Ischemia and Reperfusion Injury: from

Important Note: This product as supplied is intended for research use only, not for use in human, therapeutic or diagnostic applications.

Microglia to Adjacent Neuron and Endothelial Cells via IL-1 $\beta$ /IL-1R1/TRAF6. MOL NEUROBIOL. 2023 Jan;;1-18 WB,IF ;Rat. 36717480

- **[IF=4.427]** Zhang H et al. Aluminum trichloride-induced hippocampal inflammatory lesions are associated with IL-1 $\beta$ -activated IL-1 signaling pathway in developing rats. Chemosphere. 2018 Jul;203:170-178. WB ;Rat. 29614410