

**bs-2733R**

**[ Primary Antibody ]**

## BCL10 Rabbit pAb

**Bioss**  
ANTIBODIES

www.bioss.com.cn

sales@bioss.com.cn

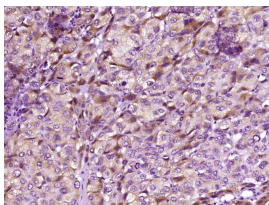
techsupport@bioss.com.cn

400-901-9800

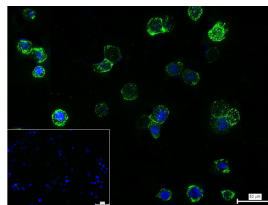
### — DATASHEET —

<b>Host:</b> Rabbit	<b>Isotype:</b> IgG	<b>Applications:</b> IHC-P (1:100-500) IHC-F (1:100-500) IF (1:100-500) Flow-Cyt (1µg/Test) ICC/IF (1:50-1:200)  <b>Reactivity:</b> Human (predicted: Mouse, Rat, Rabbit, Pig, Cow, Dog, Horse)  <b>Predicted MW.:</b> 26 kDa  <b>Subcellular Location:</b> Cell membrane ,Cytoplasm
<b>Clonality:</b> Polyclonal		
<b>GeneID:</b> 8915	<b>SWISS:</b> O95999	
<b>Target:</b> BCL10		
<b>Immunogen:</b> KLH conjugated synthetic peptide derived from human Bcl-10: 81-180/233.		
<b>Purification:</b> affinity purified by Protein A		
<b>Concentration:</b> 1mg/ml		
<b>Storage:</b> 0.01M TBS (pH7.4) with 1% BSA, 0.02% Proclin300 and 50% Glycerol. Shipped at 4°C. Store at -20°C for one year. Avoid repeated freeze/thaw cycles.		
<b>Background:</b> This gene was identified by its translocation in a case of mucosa-associated lymphoid tissue (MALT) lymphoma. The protein encoded by this gene contains a caspase recruitment domain (CARD), and has been shown to induce apoptosis and to activate NF-kappaB. This protein is reported to interact with other CARD domain containing proteins including CARD9, 10, 11 and 14, which are thought to function as upstream regulators in NF-kappaB signaling. This protein is found to form a complex with MALT1, a protein encoded by another gene known to be translocated in MALT lymphoma. MALT1 and this protein are thought to synergize in the activation of NF-kappaB, and the deregulation of either of them may contribute to the same pathogenetic process that leads to the malignancy. [provided by RefSeq, Jul 2008]		

### — VALIDATION IMAGES —



Paraformaldehyde-fixed, paraffin embedded (Human liver carcinoma); Antigen retrieval by boiling in sodium citrate buffer (pH6.0) for 15min; Block endogenous peroxidase by 3% hydrogen peroxide for 20 minutes; Blocking buffer (normal goat serum) at 37°C for 30min; Antibody incubation with (Bcl-10) Polyclonal Antibody, Unconjugated (bs-2733R) at 1:400 overnight at 4°C, followed by operating according to SP Kit(Rabbit) (sp-0023) instructions and DAB staining.



4% Paraformaldehyde-fixed Raji (H) cell; Antibody incubation with (Bcl10) polyclonal Antibody, unconjugated (bs-2733R) 1:100, 90 min at 37°C; followed by conjugated Goat Anti-Rabbit IgG antibody (green, bs-40295G-FITC) at 37°C for 90 min, DAPI (blue, C02-04002) was used to stain the cell nuclei. PBS instead of the primary antibody was used as the blank control.