

**bs-4006R****[ Primary Antibody ]****ARSA Rabbit pAb****BioSS**  
**ANTIBODIES**

www.bioss.com.cn

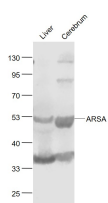
sales@bioss.com.cn

techsupport@bioss.com.cn

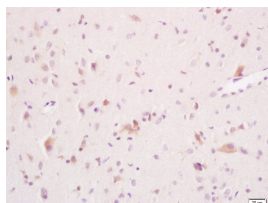
400-901-9800

**— DATASHEET —**

<b>Host:</b> Rabbit <b>Clonality:</b> Polyclonal <b>GeneID:</b> 410 <b>Target:</b> ARSA <b>Immunogen:</b> KLH conjugated synthetic peptide derived from human ARSA : 368-412/507. <b>Purification:</b> affinity purified by Protein A <b>Concentration:</b> 1mg/ml <b>Storage:</b> 0.01M TBS (pH7.4) with 1% BSA, 0.02% Proclin300 and 50% Glycerol. Shipped at 4°C. Store at -20°C for one year. Avoid repeated freeze/thaw cycles. <b>Background:</b> The protein encoded by this gene hydrolyzes cerebroside sulfate to cerebroside and sulfate. Defects in this gene lead to metachromatic leucodystrophy (MLD), a progressive demyelination disease which results in a variety of neurological symptoms and ultimately death. Alternatively spliced transcript variants have been described for this gene. [provided by RefSeq, Dec 2010].	<b>Isotype:</b> IgG  <b>SWISS:</b> P15289	<b>Applications:</b> <b>WB</b> (1:500-2000) <b>IHC-P</b> (1:100-500) <b>IHC-F</b> (1:100-500) <b>IF</b> (1:100-500)  <b>Reactivity:</b> Mouse, Rat (predicted: Human, Rabbit, Pig, Cow, Dog, Horse)  <b>Predicted MW.:</b> 45/54 kDa  <b>Subcellular Location:</b> Cytoplasm
--	---	--

**— VALIDATION IMAGES —**

Sample: Liver (Mouse) Lysate at 40 ug Cerebrum (Mouse) Lysate at 40 ug  
Primary: Anti- ARSA (bs-4006R) at 1/1000 dilution  
Secondary: IRDye800CW Goat Anti-Rabbit IgG at 1/20000 dilution  
Predicted band size: 45' 54 kD  
Observed band size: 53 kD



Tissue/cell: rat brain tissue; 4% Paraformaldehyde-fixed and paraffin-embedded; Antigen retrieval: citrate buffer (0.01M, pH 6.0), Boiling bathing for 15min; Block endogenous peroxidase by 3% Hydrogen peroxide for 30min; Blocking buffer (normal goat serum, C-0005) at 37°C for 20 min; Incubation: Anti-ARSA Polyclonal Antibody, Unconjugated(bs-4006R) 1:200, overnight at 4°C, followed by conjugation to the secondary antibody(SP-0023) and DAB(C-0010) staining