

bs-1114R**[Primary Antibody]****beta Adducin Rabbit pAb****BioSS**
ANTIBODIES

www.bioss.com.cn

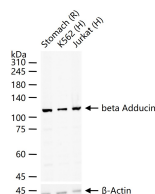
sales@bioss.com.cn

techsupport@bioss.com.cn

400-901-9800

— DATASHEET —

Host: Rabbit Clonality: Polyclonal GeneID: 119 Target: beta Adducin Immunogen: KLH conjugated synthetic peptide derived from human beta Adducin protein: 401-500/725. Purification: affinity purified by Protein A Concentration: 1mg/ml Storage: 0.01M TBS (pH7.4) with 1% BSA, 0.02% Proclin300 and 50% Glycerol. Shipped at 4°C. Store at -20°C for one year. Avoid repeated freeze/thaw cycles. Background: Adducins are a family of cytoskeletal proteins encoded by three genes (alpha, beta, gamma). Adducin is a heterodimeric protein that consists of related subunits, which are produced from distinct genes but share a similar structure. Alpha and beta adducin include a protease-resistant N-terminal region and a protease-sensitive, hydrophilic C-terminal region. Alpha and gamma adducins are ubiquitously expressed. In contrast, beta adducin is expressed at high levels in brain and hematopoietic tissues. Adducin binds with high affinity to Ca ²⁺ /calmodulin and is a substrate for protein kinases A and C. Alternative splicing results in multiple variants encoding distinct isoforms; however, not all variants have been fully described.	Isotype: IgG SWISS: P35612 Applications: WB (1:500-2000) Reactivity: Human, Rat Predicted MW.: 80 kDa Subcellular Location: Cell membrane ,Cytoplasm
---	---

— VALIDATION IMAGES —

25 ug total protein per lane of various lysates (see on figure) probed with beta Adducin polyclonal antibody, unconjugated (bs-1114R) at 1:1000 dilution and 4°C overnight incubation. Followed by conjugated secondary antibody incubation at r.t. for 60 min.