

bsm-60774R**[Primary Antibody]****BioSS**
ANTIBODIES

www.bioss.com.cn

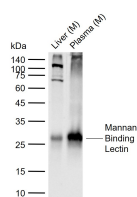
sales@bioss.com.cn

techsupport@bioss.com.cn

400-901-9800

Mannan Binding Lectin Recombinant Rabbit mAb**— DATASHEET —**

Host: Rabbit	Isotype: IgG	Applications: WB (1:500-1000)
Clonality: Recombinant	CloneNo.: 18B9	Reactivity: Mouse (predicted: Human)
GeneID: 4153	SWISS: P11226	
Target: Mannan Binding Lectin		
Purification: affinity purified by Protein A		
Concentration: 1mg/ml		
Storage: PBS, Glycerol, BSA. Shipped at 4°C. Store at -20°C for one year. Avoid repeated freeze/thaw cycles.		Predicted MW.: 26 kDa
Background: This gene encodes the soluble mannose-binding lectin or mannose-binding protein found in serum. The protein encoded belongs to the collectin family and is an important element in the innate immune system. The protein recognizes mannose and N-acetylglucosamine on many microorganisms, and is capable of activating the classical complement pathway. Deficiencies of this gene have been associated with susceptibility to autoimmune and infectious diseases. [provided by RefSeq, Jul 2008].		Subcellular Location: Secreted

— VALIDATION IMAGES —

Sample: Lane 1: Mouse Liver tissue lysates Lane 2: Mouse Plasma tissue lysates Primary: Anti-Mannan Binding Lectin (bsm-60774R) at 1/1000 dilution Secondary: IRDye800CW Goat Anti-Rabbit IgG at 1/20000 dilution Predicted band size: 26 kDa Observed band size: 26 kDa