

bsm-60755R**[Primary Antibody]****KCNJ6 Recombinant Rabbit mAb****BioSS**
ANTIBODIES

www.bioss.com.cn

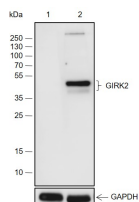
sales@bioss.com.cn

techsupport@bioss.com.cn

400-901-9800

— DATASHEET —

Host: Rabbit	Isotype: IgG	Applications: WB (1:500-2000)
Clonality: Recombinant		Reactivity: Mouse
GeneID: 16522	SWISS: P48542	
Target: KCNJ6		
Purification: affinity purified by Protein A		Predicted MW.: 47 kDa
Concentration: 1mg/ml		Subcellular Location: Cell membrane
Storage: PBS, Glycerol, BSA. Shipped at 4°C. Store at -20°C for one year. Avoid repeated freeze/thaw cycles.		
Background: This gene encodes a member of the G protein-coupled inwardly-rectifying potassium channel family of inward rectifier potassium channels. This type of potassium channel allows a greater flow of potassium into the cell than out of it. These proteins modulate many physiological processes, including heart rate in cardiac cells and circuit activity in neuronal cells, through G-protein coupled receptor stimulation. Mutations in this gene are associated with Keppen-Lubinsky Syndrome, a rare condition characterized by severe developmental delay, facial dysmorphism, and intellectual disability. [provided by RefSeq, Apr 2015]		

— VALIDATION IMAGES —

Sealing solution and concentration: 5%

NFDM/TBST Dilution ratio of primary antibody:

1:5000 Incubation conditions for primary

antibody: 2 hours at room temperature

Secondary antibody: Goat Anti Rabbit IgG H&L

(HRP) Cracking solution: 1: Mouse liver (negative

control), 2: Mouse brain Protein loading amount:

20 µg Exposure time: 60 seconds Theoretical

molecular weight: 48 kDa Actual molecular

weight: 40, 48 kDa