

**bs-3442R****[ Primary Antibody ]****phospho-Tuberin (Ser939) Rabbit pAb****BioSS**  
**ANTIBODIES**

www.bioss.com.cn

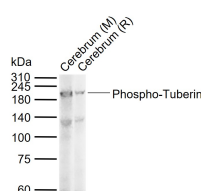
sales@bioss.com.cn

techsupport@bioss.com.cn

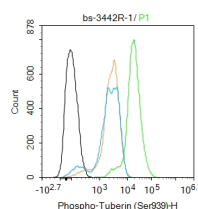
400-901-9800

**— DATASHEET —**

<b>Host:</b> Rabbit	<b>Isotype:</b> IgG	<b>Applications:</b> <b>WB</b> (1:500-2000) <b>Flow-Cyt</b> (1ug/Test)
<b>Clonality:</b> Polyclonal		
<b>GeneID:</b> 7249	<b>SWISS:</b> P49815	<b>Reactivity:</b> Human, Mouse, Rat (predicted: Rabbit, Pig, Cow, Chicken, Dog, Horse)
<b>Target:</b> Tuberin (Ser939)		
<b>Immunogen:</b> KLH conjugated Synthesised phosphopeptide derived from human Tuberin around the phosphorylation site of Ser939: ST(p-S)LN.		
<b>Purification:</b> affinity purified by Protein A		<b>Predicted MW.:</b> 200 kDa
<b>Concentration:</b> 1mg/ml		<b>Subcellular Location:</b> Cell membrane ,Cytoplasm
<b>Storage:</b> 0.01M TBS (pH7.4) with 1% BSA, 0.02% Proclin300 and 50% Glycerol. Shipped at 4°C. Store at -20°C for one year. Avoid repeated freeze/thaw cycles.		
<b>Background:</b> Mutations in this gene lead to tuberous sclerosis complex. Its gene product is believed to be a tumor suppressor and is able to stimulate specific GTPases. The protein associates with hamartin in a cytosolic complex, possibly acting as a chaperone for hamartin. Alternative splicing results in multiple transcript variants encoding different isoforms. [provided by RefSeq].		

**— VALIDATION IMAGES —**

Sample: Lane 1: Mouse Cerebrum tissue lysates  
Lane 2: Rat Cerebrum tissue lysates Primary:  
Anti-Phospho-Tuberin (Ser939) (bs-3442R) at  
1/1000 dilution Secondary: IRDye800CW Goat  
Anti-Rabbit IgG at 1/20000 dilution Predicted  
band size: 200 kDa Observed band size: 200 kDa



Blank control (black line) :HeLa. Primary  
Antibody (green line): Rabbit Anti-Phospho-  
Tuberin (Ser939) antibody (bs-3442R)  
Dilution:1ug/Test; Secondary Antibody (white  
blue line) : Goat anti-rabbit IgG-AF488 Dilution:  
0.5ug/Test. Isotype control (orange line) :  
Normal Rabbit IgG Protocol The cells were fixed  
with 4% PFA (10min at room temperature)and  
then permeabilized with 90% ice-cold methanol  
for 20 min at -20°C, The cells were then  
incubated in 5%BSA to block non-specific  
protein-protein interactions for 30 min at room  
temperature .Cells stained with Primary  
Antibody for 30 min at room temperature. The  
secondary antibody used for 40 min at room  
temperature. Acquisition of 20,000 events was  
performed.