

**bs-43573R****[ Primary Antibody ]****ESM1 Rabbit pAb****Bioss**  
ANTIBODIES

www.bioss.com.cn

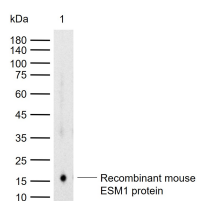
sales@bioss.com.cn

techsupport@bioss.com.cn

400-901-9800

**— DATASHEET —**

<b>Host:</b> Rabbit	<b>Isotype:</b> IgG	<b>Applications:</b> WB (1:500-2000)
<b>Clonality:</b> Polyclonal		<b>Reactivity:</b> Mouse (predicted: Rat)
<b>GeneID:</b> 71690	<b>SWISS:</b> Q9QYY7	
<b>Target:</b> ESM1		
<b>Immunogen:</b> Recombinant mouse ESM1 protein: 22-184/184.		<b>Predicted MW.:</b> 20 kDa
<b>Purification:</b> affinity purified by Protein A		<b>Subcellular Location:</b> Secreted
<b>Concentration:</b> 1mg/ml		
<b>Storage:</b> 0.01M TBS (pH7.4) with 1% BSA, 0.02% Proclin300 and 50% Glycerol. Shipped at 4°C. Store at -20°C for one year. Avoid repeated freeze/thaw cycles.		
<b>Background:</b> ESM1 is a secreted dermatan sulfate proteoglycan which is predominantly expressed in the endothelial cells in human lung and kidney tissues. Expression of ESM1 is regulated by cytokines. ESM1 may have a role in lung endothelial cell-leukocyte interactions. The transcript contains multiple polyadenylation and mRNA instability signals. Two transcript variants encoding different isoforms have been found for this gene.		

**— VALIDATION IMAGES —**

Sample: Lane 1: Recombinant mouse ESM1 protein, C-His(bs-43573P) Primary: Anti-ESM1 (bs-43573R) at 1/1000 dilution Secondary: IRDye800CW Goat Anti-Rabbit IgG at 1/20000 dilution Predicted band size: 20 kDa Observed band size: 17 kDa