

bs-1274R**[Primary Antibody]**

www.bioss.com.cn

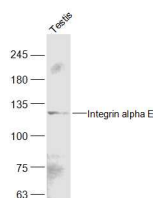
sales@bioss.com.cn

techsupport@bioss.com.cn

400-901-9800

Integrin alpha E Rabbit pAb**— DATASHEET —**

Host: Rabbit	Isotype: IgG	Applications: WB (1:500-2000)
Clonality: Polyclonal		Reactivity: Human, Mouse (predicted: Rat)
GeneID: 3682	SWISS: P38570	
Target: Integrin alpha E		Predicted MW.: 110/128 kDa
Immunogen: KLH conjugated synthetic peptide derived from human Integrin alpha-E heavy chain: 1001-1179/1179. < Cytoplasmic >		Subcellular Location: Cell membrane
Purification: affinity purified by Protein A		
Concentration: 1mg/ml		
Storage: 0.01M TBS (pH7.4) with 1% BSA, 0.02% Proclin300 and 50% Glycerol. Shipped at 4°C. Store at -20°C for one year. Avoid repeated freeze/thaw cycles.		
Background: Integrins are heterodimeric integral membrane proteins composed of an alpha chain and a beta chain. This gene encodes an I-domain-containing alpha integrin that undergoes post-translational cleavage in the extracellular domain, yielding disulfide-linked heavy and light chains. In combination with the beta 7 integrin, this protein forms the E-cadherin binding integrin known as the human mucosal lymphocyte-1 antigen. This protein is preferentially expressed in human intestinal intraepithelial lymphocytes (IEL), and in addition to a role in adhesion, it may serve as an accessory molecule for IEL activation. [provided by RefSeq, Jul 2008]		

— VALIDATION IMAGES —

Sample: Testis (Mouse) Lysate at 40 ug Primary:
Anti-Integrin alpha E (bs-1274R) at 1/300 dilution
Secondary: IRDye800CW Goat Anti-Rabbit IgG at
1/20000 dilution Predicted band size: 128 kD
Observed band size: 128 kD

— SELECTED CITATIONS —

- **[IF=1.851]** Li Y et al. Role of CCR7 on dendritic cell-mediated immune tolerance in the airways of allergy-induced asthmatic rats. Mol Med Rep. 2019 Sep 20. WB ;Rat. 31545493