

**bs-1273R****[ Primary Antibody ]****BioSS**  
**ANTIBODIES**

www.bioss.com.cn

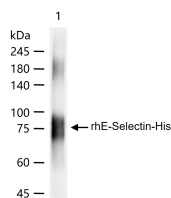
sales@bioss.com.cn

techsupport@bioss.com.cn

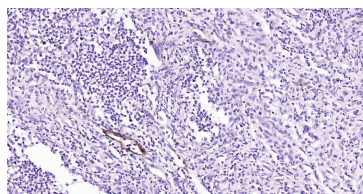
400-901-9800

**E-Selectin Rabbit pAb****— DATASHEET —**

<b>Host:</b> Rabbit	<b>Isotype:</b> IgG	<b>Applications:</b> <b>WB</b> (1:500-2000)
<b>Clonality:</b> Polyclonal		<b>IHC-P</b> (1:100-500)
<b>GeneID:</b> 20339	<b>SWISS:</b> Q00690	<b>IHC-F</b> (1:100-500)
<b>Target:</b> E-Selectin		<b>IF</b> (1:100-500)
<b>Immunogen:</b> KLH conjugated synthetic peptide derived from mouse E-Selectin: 501-612/612. < Cytoplasmic >		<b>Reactivity:</b> Human
<b>Purification:</b> affinity purified by Protein A		
<b>Concentration:</b> 1mg/ml		<b>Predicted MW.:</b> 65 kDa
<b>Storage:</b> 0.01M TBS (pH7.4) with 1% BSA, 0.02% Proclin300 and 50% Glycerol. Shipped at 4°C. Store at -20°C for one year. Avoid repeated freeze/thaw cycles.		<b>Subcellular Location:</b> Cell membrane
<b>Background:</b> The protein encoded by this gene is found in cytokine-stimulated endothelial cells and is thought to be responsible for the accumulation of blood leukocytes at sites of inflammation by mediating the adhesion of cells to the vascular lining. It exhibits structural features such as the presence of lectin- and EGF-like domains followed by short consensus repeat (SCR) domains that contain 6 conserved cysteine residues. These proteins are part of the selectin family of cell adhesion molecules. Adhesion molecules participate in the interaction between leukocytes and the endothelium and appear to be involved in the pathogenesis of atherosclerosis. [provided by RefSeq, Jul 2008]		

**— VALIDATION IMAGES —**

100 ng rhE-Selectin-His protein (bs-43646P) per lane probed with E-Selectin polyclonal antibody respectively, unconjugated (bs-1273R) at 1:1000 dilution and 4°C overnight incubation. Followed by corresponding conjugated secondary antibody incubation at r.t. for 60 min.



Paraformaldehyde-fixed, paraffin embedded Human Colon Cancer; Antigen retrieval by boiling in sodium citrate buffer (pH6.0) for 15 min; Antibody incubation with E-Selectin Polyclonal Antibody, Unconjugated (bs-1273R) at 1:200 overnight at 4°C, followed by conjugation to the SP Kit (Rabbit, SP-0023) and DAB (C-0010) staining.

**— SELECTED CITATIONS —**

- **[IF=6.1]** Yiyang Xie. et al. Portable pH meter-based competitive immunoassay of E-selectin using urease-encapsulated metal-organic frameworks. TALANTA. 2025 Jan;;127613 ;. 39862514
- **[IF=6.1]** Jun Zhang. et al.Parthenolide improves sepsis-induced coagulopathy by inhibiting mitochondrial-mediated apoptosis in vascular endothelial cells through BRD4/BCL-xL pathway.JOURNAL OF TRANSLATIONAL MEDICINE.2025 Jan 17;23(1):80. ;Rat. 39825405
- **[IF=6.1]** Yiyang Xie. et al. Portable pH meter-based competitive immunoassay of E-selectin using urease-encapsulated metal-organic frameworks. TALANTA. 2025 Jan;;127613 ;. 39862514

Important Note: This product as supplied is intended for research use only, not for use in human, therapeutic or diagnostic applications.

- **[IF=6.408]** Zhao, Lixin. et al. A nanozyme-based competitive electrochemical immunosensor for the determination of E-selectin. MICROCHIM ACTA. 2022 Nov;189(11):1-10 Other ;Human. 36198886
- **[IF=4.545]** Zhixiong Li et al. Shuxuening injection facilitates neurofunctional recovery via down-regulation of G-CSF-mediated granulocyte adhesion and diapedesis pathway in a subacute stroke Mousemodel. Biomed Pharmacother. 2020 Jul;127:110213. WB ;Mouse. 32417690