

bs-1271R**[Primary Antibody]****HTRA2 Rabbit pAb****Bioss**
ANTIBODIES

www.bioss.com.cn

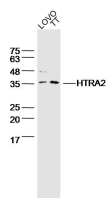
sales@bioss.com.cn

techsupport@bioss.com.cn

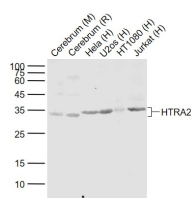
400-901-9800

— DATASHEET —**Host:** Rabbit**Isotype:** IgG**Clonality:** Polyclonal**GeneID:** 27429**SWISS:** O43464**Target:** HTRA2**Immunogen:** KLH conjugated synthetic peptide derived from human HtrA2: 355-458/458.**Purification:** affinity purified by Protein A**Concentration:** 1mg/ml**Storage:** 0.01M TBS (pH7.4) with 1% BSA, 0.02% Proclin300 and 50% Glycerol.

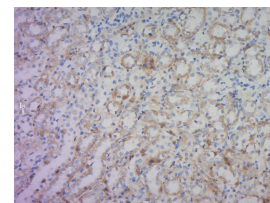
Shipped at 4°C. Store at -20°C for one year. Avoid repeated freeze/thaw cycles.

Background: This gene encodes a serine protease. The protein has been localized in the endoplasmic reticulum and interacts with an alternatively spliced form of mitogen-activated protein kinase 14. The protein has also been localized to the mitochondria with release to the cytosol following apoptotic stimulus. The protein is thought to induce apoptosis by binding the apoptosis inhibitory protein baculoviral IAP repeat-containing 4. Nuclear localization of this protein has also been observed. Alternate splicing of this gene results in two transcript variants encoding different isoforms. Additional transcript variants have been described, but their full-length sequences have not been determined. [provided by RefSeq, Jul 2008]**Applications:** **WB** (1:500-2000)**IHC-P** (1:100-500)**IHC-F** (1:100-500)**IF** (1:100-500)**ICC/IF** (1:100)**Reactivity:** Human, Mouse, Rat
(predicted: Rabbit, Cow, Dog)**Predicted MW.:** 35 kDa**Subcellular Location:** Cell membrane ,Cytoplasm**— VALIDATION IMAGES —**

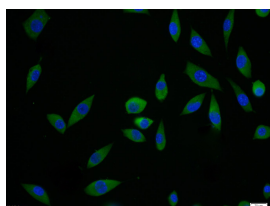
Sample: LOVO Cell Lysate at 40 ug
 TT Cell Lysate at 40 ug
 Primary: Anti-HTRA2 (bs-1271R) at 1/300 dilution
 Secondary: IRDye800CW Goat Anti-Rabbit IgG at 1/20000 dilution
 Predicted band size: 35 kD
 Observed band size: 35 kD



Sample: Lane 1: Cerebrum (Mouse) Lysate at 40 ug
 Lane 2: Cerebrum (Rat) Lysate at 40 ug
 Lane 3: Hela (Human) Cell Lysate at 30 ug
 Lane 4: U2os (Human) Cell Lysate at 30 ug
 Lane 5: HT1080 (Human) Cell Lysate at 30 ug
 Lane 6: Jurkat (Human) Cell Lysate at 30 ug
 Primary: Anti-HTRA2 (bs-1271R) at 1/1000 dilution
 Secondary: IRDye800CW Goat Anti-Rabbit IgG at 1/20000 dilution
 Predicted band size: 32 kD
 Observed band size: 32 kD



Tissue/cell: rat kidney tissue; 4% Paraformaldehyde-fixed and paraffin-embedded; Antigen retrieval: citrate buffer (0.01M, pH 6.0), Boiling bathing for 15min; Block endogenous peroxidase by 3% Hydrogen peroxide for 30min; Blocking buffer (normal goat serum, C-0005) at 37°C for 20 min; Incubation: Anti-HTRA2 Polyclonal Antibody, Unconjugated (bs-1271R) 1:200, overnight at 4°C, followed by conjugation to the secondary antibody (SP-0023) and DAB (C-0010) staining



SH-SY5Y cell; 4% Paraformaldehyde-fixed; Triton X-100 at room temperature for 20 min; Blocking

Important Note: This product as supplied is intended for research use only, not for use in human, therapeutic or diagnostic applications.

buffer (normal goat serum, C-0005) at 37°C for 20 min; Antibody incubation with (HTRA2) polyclonal Antibody, Unconjugated (bs-1271R) 1:100, 90 minutes at 37°C; followed by a conjugated Goat Anti-Rabbit IgG antibody at 37°C for 90 minutes, DAPI (blue, C02-04002) was used to stain the cell nuclei.