

**bs-1251R****[ Primary Antibody ]****CD166 Rabbit pAb****BioSS**  
**ANTIBODIES**

www.bioss.com.cn

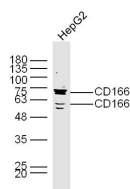
sales@bioss.com.cn

techsupport@bioss.com.cn

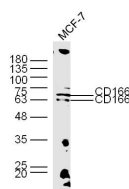
400-901-9800

**— DATASHEET —**

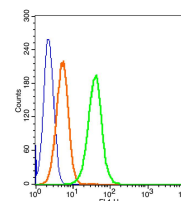
<b>Host:</b> Rabbit	<b>Isotype:</b> IgG	<b>Applications:</b> <b>WB</b> (1:500-2000) <b>Flow-Cyt</b> (1µg/Test)
<b>Clonality:</b> Polyclonal		<b>Reactivity:</b> Human (predicted: Mouse, Rat, Rabbit, Pig, Cow, Chicken, Dog, Horse)
<b>GeneID:</b> 214	<b>SWISS:</b> Q13740	<b>Predicted MW.:</b> 62 kDa
<b>Target:</b> CD166		<b>Subcellular Location:</b> Cell membrane
<b>Immunogen:</b> KLH conjugated synthetic peptide derived from human CD166: 451-583/583. < Cytoplasmic >		
<b>Purification:</b> affinity purified by Protein A		
<b>Concentration:</b> 1mg/ml		
<b>Storage:</b> 0.01M TBS (pH7.4) with 1% BSA, 0.02% Proclin300 and 50% Glycerol. Shipped at 4°C. Store at -20°C for one year. Avoid repeated freeze/thaw cycles.		
<b>Background:</b> CD166 is a member of the Ig superfamily and is expressed on activated T-cells, B cells and other cells including thymic epithelial cells, fibroblasts, keratinocytes and neurons. CD6 has been identified as a receptor for CD166. The expression of CD166 is up-regulated in low-grade prostate tumors and down-regulated in high-grade tumors; may play role in progression of prostate cancer.		

**— VALIDATION IMAGES —**

Sample: HepG2 Cell (Human) Lysate at 30 ug  
 Primary: Anti-CD166 (bs-1251R) at 1/300 dilution  
 Secondary: IRDye800CW Goat Anti-Rabbit IgG at 1/20000 dilution Predicted band size: 62 kD  
 Observed band size: 62/70 kD



Sample: MCF-7 Cell (Human) Lysate at 30 ug  
 Primary: Anti-CD166 (bs-1251R) at 1/300 dilution  
 Secondary: IRDye800CW Goat Anti-Rabbit IgG at 1/20000 dilution Predicted band size: 62 kD  
 Observed band size: 62/70 kD



Blank control: Molt-4 Cells(blue). Primary Antibody: Rabbit Anti-CD166/FITC Conjugated antibody (bs-1251R/AF488), Dilution: 1µg in 100 µL 1X PBS containing 0.5% BSA; Isotype Control Antibody: Rabbit IgG/AF488(orange), used under the same conditions. Protocol The cells were fixed with 2% paraformaldehyde (10 min) . The cells were washed twice with 1 X PBS. The cells were incubated in 1 X PBS containing 0.5% BSA + 1 0% goat serum (15 min) to block non-specific protein-protein interactions followed by the incubated with antibody (bs-1251R/AF488, 1µg /1x10<sup>6</sup> cells) for 30 min on ice. Acquisition of 20,000 events was performed.

**— SELECTED CITATIONS —**

- **[IF=6.081]** Qianyu Cheng. et al. Establishing and characterizing human stem cells from the apical papilla immortalized by hTERT gene transfer. FRONT CELL DEV BIOL. 2023; 11: 1158936 ICC ;Human. 37283947
- **[IF=3.53]** Lee, Tao-Chen, et al. "Comparison of Surface Markers between Human and Rabbit Mesenchymal Stem Cells." PLOS ONE 9.11 (2014): e111390. Other ;Rabbit. 25380245
- **[IF=4.175]** Yue Wu. et al. LncRNA WDFY3-AS2 promotes cisplatin resistance and the cancer stem cell in ovarian cancer

Important Note: This product as supplied is intended for research use only, not for use in human, therapeutic or diagnostic applications.

- by regulating hsa-miR-139-5p/SDC4 axis. Cancer Cell Int. 2021 Dec;21(1):1-14 FCM ;Human. 34051810
- **[IF=3.739]** Vašíček J et al. Combined approach for characterization and quality assessment of rabbit bone marrow-derived mesenchymal stem cells intended for gene banking. N Biotechnol. 2019 Aug 7;54:1-12. FCM ;Rabbit. 31400479
  - **[IF=4.486]** Wenping Luo. et al. BMP9 - initiated osteogenic/odontogenic differentiation of mouse tooth germ mesenchymal cells (TGMCS) requires Wnt/ $\beta$ -catenin signalling activity. 2021 Feb 18 IF ;Mouse. 33605035