

bs-5853R**[Primary Antibody]**

Bioss
ANTIBODIES

www.bioss.com.cn

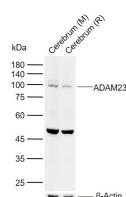
sales@bioss.com.cn

techsupport@bioss.com.cn

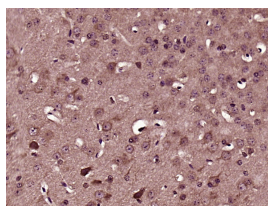
400-901-9800

ADAM23 Rabbit pAb**DATASHEET**

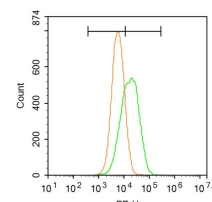
Host: Rabbit	Isotype: IgG	Applications: WB (1:500-2000) IHC-P (1:100-500) IHC-F (1:100-500) IF (1:100-500) Flow-Cyt (0.2ug/Test) Reactivity: Human, Mouse, Rat (predicted: Rabbit, Pig, Cow, Horse) Predicted MW.: 75-95 kDa Subcellular Location: Secreted ,Cell membrane
Clonality: Polyclonal		
GeneID: 8745	SWISS: O75077	
Target: ADAM23		
Immunogen: KLH conjugated synthetic peptide derived from human ADAM23: 551-650/832. < Extracellular >		
Purification: affinity purified by Protein A		
Concentration: 1mg/ml		
Storage: 0.01M TBS (pH7.4) with 1% BSA, 0.02% Proclin300 and 50% Glycerol. Shipped at 4°C. Store at -20°C for one year. Avoid repeated freeze/thaw cycles.		
Background: ADAM23 is a non-catalytic metalloprotease-like protein. It is highly expressed in the brain, primarily in the amygdala, caudate nucleus, hypothalamus, thalamus, cerebral cortex and occipital pole, and weakly expressed in the heart. 3 isoforms are produced by alternative splicing, alpha, beta and gamma. ADAM23 may play a role in cell-cell and cell-matrix interactions.		

VALIDATION IMAGES

Sample: Lane 1: Mouse Cerebrium tissue lysates
Lane 2: Rat Cerebrium tissue lysates Primary:
Anti-ADAM23 (bs-5853R) at 1/1000 dilution
Secondary: IRDye800CW Goat Anti-Rabbit IgG at
1/20000 dilution Predicted band size: 75-95 kDa
Observed band size: 95 kDa



Paraformaldehyde-fixed, paraffin embedded
(Mouse brain); Antigen retrieval by boiling in
sodium citrate buffer (pH6.0) for 15min; Block
endogenous peroxidase by 3% hydrogen
peroxide for 20 minutes; Blocking buffer (normal
goat serum) at 37°C for 30min; Antibody
incubation with (ADAM23) Polyclonal Antibody,
Unconjugated (bs-5853R) at 1:500 overnight at
4°C, followed by a conjugated secondary
(sp-0023) for 20 minutes and DAB staining.



Blank control: U87MG. Primary Antibody (green
line): Rabbit Anti-ADAM23 antibody (bs-5853R)
Dilution: 1μg /10⁶ cells; Isotype Control
Antibody (orange line): Rabbit IgG . Secondary
Antibody : Goat anti-rabbit IgG-PE Dilution: 1μg
/test. The cells were incubated in 5%BSA to
block non-specific protein-protein interactions
for 30 min at room temperature .Cells stained
with Primary Antibody for 30 min at room
temperature. The secondary antibody used for
40 min at room temperature. Acquisition of
20,000 events was performed.

SELECTED CITATIONS

- **[IF=2.3]** Pingping Yao. et al. Identification of ADAM23 as a Potential Signature for Psoriasis Using Integrative Machine-Learning and Experimental Verification. INT J GEN MED. 2023 Dec 31 IF, WB, IHC ; Human, Mouse. 38148887