

bs-5857R**[Primary Antibody]****ADAMTS15 Rabbit pAb****Bioss**
ANTIBODIES

www.bioss.com.cn

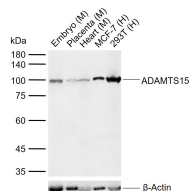
sales@bioss.com.cn

techsupport@bioss.com.cn

400-901-9800

— DATASHEET —

Host: Rabbit	Isotype: IgG	Applications: WB (1:500-2000)
Clonality: Polyclonal		Reactivity: Human, Mouse
GeneID: 170689	SWISS: Q8TE58	
Target: ADAMTS15		
Immunogen: KLH conjugated synthetic peptide derived from human ADAMTS15: 141-240/950.		Predicted MW.: 103 kDa
Purification: affinity purified by Protein A		Subcellular Location: Secreted ,Extracellular
Concentration: 1mg/ml		Location: matrix
Storage: 0.01M TBS (pH7.4) with 1% BSA, 0.02% Proclin300 and 50% Glycerol. Shipped at 4°C. Store at -20°C for one year. Avoid repeated freeze/thaw cycles.		
Background: ADAMTS proteases are secreted enzymes containing a prometalloprotease domain of the repolysin type. The ADAMTS proteases function in processing of procollagens and von Willebrand factor as well as catabolism of aggrecan, versican and brevican. They have important roles in connective tissue organization, coagulation, inflammation, arthritis, angiogenesis and cell migration.		

— VALIDATION IMAGES —

Sample: Lane 1: Mouse Embryo tissue lysates
Lane 2: Mouse Placenta tissue lysates Lane 3:
Mouse Heart tissue lysates Lane 4: Human MCF-7
cell lysates Lane 5: Human 293T cell lysates
Primary: Anti-ADAMTS15 (bs-5857R) at 1/1000
dilution Secondary: IRDye800CW Goat Anti-
Rabbit IgG at 1/20000 dilution Predicted band
size: 103 kDa Observed band size: 100 kDa