

**bs-5865R****[ Primary Antibody ]****KLK12 Rabbit pAb****BioSS**  
**ANTIBODIES**

www.bioss.com.cn

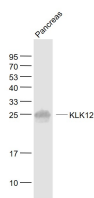
sales@bioss.com.cn

techsupport@bioss.com.cn

400-901-9800

**— DATASHEET —**

<b>Host:</b> Rabbit	<b>Isotype:</b> IgG	<b>Applications:</b> WB (1:500-2000)
<b>Clonality:</b> Polyclonal		<b>Reactivity:</b> Mouse (predicted: Human, Rat, Cow)
<b>GeneID:</b> 43849	<b>SWISS:</b> Q9UKR0	
<b>Target:</b> KLK12		<b>Predicted MW.:</b> 25 kDa
<b>Immunogen:</b> KLH conjugated synthetic peptide derived from human KLK12: 151-248/248.		<b>Subcellular Location:</b> Secreted
<b>Purification:</b> affinity purified by Protein A		
<b>Concentration:</b> 1mg/ml		
<b>Storage:</b> 0.01M TBS (pH7.4) with 1% BSA, 0.02% Proclin300 and 50% Glycerol. Shipped at 4°C. Store at -20°C for one year. Avoid repeated freeze/thaw cycles.		
<b>Background:</b> Kallikrein 12, also known as Kallikrein-like5 (KLK-L5), is a trypsin-like serine proteinase. It was discovered by cloning the kallikrein locus on chromosome 19, and was found to be similar to the other kallikrein family genes. It is produced by a number of tissues, including pancreas, salivary gland, breast, prostate, uterus, lung, thymus, thyroid, brain, stomach and colon. Kallikrein 12 message has been reported to be decreased in breast cancer. Different splice variants of kallikrein-12 have been identified; a 254 amino acid form, 248 amino acids form, and a truncated 111 amino acid form.		

**— VALIDATION IMAGES —**

Sample: Pancreas (Mouse) Lysate at 40 ug  
Primary: Anti- KLK12 (bs-5865R) at 1/1000  
dilution Secondary: IRDye800CW Goat Anti-  
Rabbit IgG at 1/20000 dilution Predicted band  
size: 25 kD Observed band size: 25 kD

**— SELECTED CITATIONS —**

- **[IF=15.1]** Xiaojie Bian. et al. Integration Analysis of Single-Cell Multi-Omics Reveals Prostate Cancer Heterogeneity. ADV SCI. 2024 Mar;;2305724 IHC ;Human. 38483933