

## Recombinant human KCNJ18 protein, C-His

Catalog Number: bs-42080P

Concentration: >1mg/ml

Species: Human

AA Seq: 186-433/433

Predicted MW: 30

Tags: C-His

Endotoxin: Not analyzed

Purity: >90% as determined by SDS-PAGE

Purification: AC

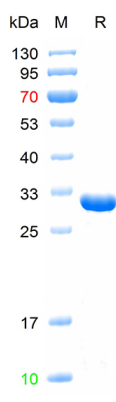
Form: Lyophilized or Liquid

Storage: 20mM Tris-HCl (pH8.0) with 2M Urea.

Stored at -70°C or -20°C. Avoid repeated freeze/thaw cycles.

**Background:** Inward rectifier potassium channels are characterized by a greater tendency to allow potassium to flow into the cell rather than out of it. Their voltage dependence is regulated by the concentration of extracellular potassium; as external potassium is raised, the voltage range of the channel opening shifts to more positive voltages. The inward rectification is mainly due to the blockage of outward current by internal magnesium.

### VALIDATION IMAGES



The purity of the protein is greater than 90% as determined by reducing SDS-PAGE.