

bs-15455R

[Primary Antibody]

HBcAg Rabbit pAb

BioSS
ANTIBODIES

www.bioss.com.cn

sales@bioss.com.cn

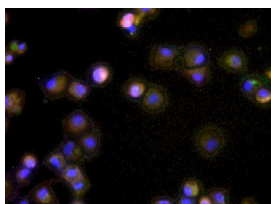
techsupport@bioss.com.cn

400-901-9800

— DATASHEET —

Host: Rabbit	Isotype: IgG	Applications: ICC/IF (1:100)
Clonality: Polyclonal		
Target: HBcAg		
Immunogen: KLH conjugated synthetic peptide derived from Hepatitis B Virus Core Antigen: 1-100/185.		
Purification: affinity purified by Protein A		
Concentration: 1mg/ml		
Storage: 0.01M TBS (pH7.4) with 1% BSA, 0.02% Proclin300 and 50% Glycerol. Shipped at 4°C. Store at -20°C for one year. Avoid repeated freeze/thaw cycles.		Reactivity: Human (predicted: Hepatitis B virus)
Background:		Predicted MW.: 21 kDa
		Subcellular Location: Cell membrane ,Cytoplasm

— VALIDATION IMAGES —



HepG2-NTCP HBV infected; 4% Paraformaldehyde-fixed; Triton X-100 at room temperature for 20 min; Blocking buffer (normal goat serum) at 37°C for 20 min; Antibody incubation with (HBcAg) Polyclonal Antibody, Unconjugated (bs-15455R) 1:100, 90 minutes at 37°C; followed by a conjugated Goat Anti-Rabbit IgG antibody (AF488,1:200) at 37°C for 90 minutes, DAPI (blue) was used to stain the cell nuclei. Maria Francesca Cortese, PhD researcher in Vall d'Hebron Research Institute (VHIR) of Barcelona (Spain).