

bs-15453R**[Primary Antibody]****HEMK2 Rabbit pAb****BioSS**
ANTIBODIES

www.bioss.com.cn

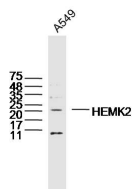
sales@bioss.com.cn

techsupport@bioss.com.cn

400-901-9800

— DATASHEET —

Host: Rabbit	Isotype: IgG	Applications: WB (1:500-2000)
Clonality: Polyclonal		Reactivity: Human (predicted: Mouse, Rat, Sheep, Horse)
GeneID: 29104	SWISS: Q9Y5N5	
Target: HEMK2		Predicted MW.: 23 kDa
Immunogen: KLH conjugated synthetic peptide derived from human HEMK2: 1-100/214.		Subcellular Location: Cytoplasm
Purification: affinity purified by Protein A		
Concentration: 1mg/ml		
Storage: 0.01M TBS (pH7.4) with 1% BSA, 0.02% Proclin300 and 50% Glycerol. Shipped at 4°C. Store at -20°C for one year. Avoid repeated freeze/thaw cycles.		
Background: HEMK2 is a 214 amino acid protein that belongs to the methyltransferase superfamily and exists as multiple alternatively spliced isoforms. The gene encoding HEMK2 maps to human chromosome 21, which houses approximately 300 genes and comprises nearly 1.5% of the human genome. Chromosome 21-associated disorders include Alzheimer's disease, amyotrophic lateral sclerosis and, most notably, Down syndrome (also known as trisomy 21).		

— VALIDATION IMAGES —

Sample: A549 Cell (Human) Lysate at 30 ug
Primary: Anti-HEMK2 (bs-15453R) at 1/300
dilution Secondary: IRDye800CW Goat Anti-
Rabbit IgG at 1/20000 dilution Predicted band
size: 23kD Observed band size: 23kD