

Rabbit IgG, BF405 conjugated

Catalog Number: bs-0295P-BF405

Concentration: 1mg/ml

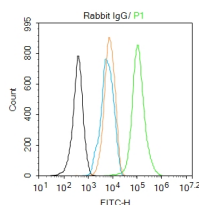
Applications: Isotype Control, etc.

Storage: 0.01M TBS (pH7.4) with 1% BSA, 0.02% Proclin300 and 50% glycerol.

Store at -20°C for one year. Avoid repeated freeze/thaw cycles.

Background: Immunoglobulin G (IgG), is one of the most abundant proteins in serum with normal levels between 8-17 mg/mL in adult blood. IgG is important for our defence against microorganisms and the molecules are produced by B lymphocytes as a part of our adaptive immune response. The IgG molecule has two separate functions; to bind to the pathogen that elicited the response and to recruit other cells and molecules to destroy the antigen. The variability of the IgG pool is generated by somatic recombination and the number of specificities in an individual at a given time point is estimated to be 1011 variants.

VALIDATION IMAGES



Blank control:NIH/3T3. Isotype Control:Rabbit IgG(bs-0295P) Dilution: 1ug/Test; Primary Antibody (green line): Rabbit Anti- beta-Actin antibody (bs- 0061R) Dilution: 1ug/Test; Secondary Antibody : Goat anti-rabbit IgG-FITC Dilution: 1ug/Test. Protocol The cells were fixed with 4% PFA (10min at room temperature)and then permeabilized with 0.1% PBST for 20 min at room temperature.The cells were incubated in 5%BSA to block non-specific protein-protein interactions for 30 min at room temperature .Cells stained with Primary Antibody for 30 min at room temperature. Isotype control antibody (orange line) was rabbit IgG . The secondary antibody(blue line) used for 40 min at room temperature.Acquisition of 20,000 events was performed.