

bs-25663R

[Primary Antibody]

hIgG4 Rabbit pAb

BioSS
ANTIBODIES

www.bioss.com.cn

sales@bioss.com.cn

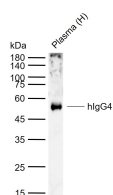
techsupport@bioss.com.cn

400-901-9800

— DATASHEET —

Host: Rabbit	Isotype: IgG	Applications: WB (1:500-2000)
Clonality: Polyclonal		Reactivity: Human (predicted: Mouse, Horse)
Target: hIgG4	SWISS: P01861	Predicted MW.: 44 kDa
Immunogen: KLH conjugated synthetic peptide derived from human IGHG4: 211-310/327.		
Purification: affinity purified by Protein A		
Concentration: 1mg/ml		
Storage: 0.01M TBS (pH7.4) with 1% BSA, 0.02% Proclin300 and 50% Glycerol. Shipped at 4°C. Store at -20°C for one year. Avoid repeated freeze/thaw cycles.		
Background: Predicted to enable antigen binding activity and immunoglobulin receptor binding activity. Predicted to be involved in several processes, including activation of immune response; defense response to other organism; and phagocytosis. Located in blood microparticle and extracellular exosome. [provided by Alliance of Genome Resources, Apr 2022]		

— VALIDATION IMAGES —



Sample: Lane 1: Human Plasma cell lysates
Primary: Anti-hIgG4 (bs-25663R) at 1/1000
dilution Secondary: IRDye800CW Goat Anti-
Rabbit IgG at 1/20000 dilution Predicted band
size: 44 kDa Observed band size: 52 kDa