

**bs-25666R**

**[ Primary Antibody ]**

## SLC10A1 Rabbit pAb

**Bioss**  
ANTIBODIES

www.bioss.com.cn

sales@bioss.com.cn

techsupport@bioss.com.cn

400-901-9800

### — DATASHEET —

**Host:** Rabbit

**Clonality:** Polyclonal

**Target:** SLC10A1

**Immunogen:** KLH conjugated synthetic peptide derived from mouse SLC10A1: 281-362/362.

**Purification:** affinity purified by Protein A

**Concentration:** 1mg/ml

**Storage:** 0.01M TBS (pH7.4) with 1% BSA, 0.02% Proclin300 and 50% Glycerol.  
Shipped at 4°C. Store at -20°C for one year. Avoid repeated freeze/thaw cycles.

**Background:** Sodium/bile acid cotransporters are integral membrane glycoproteins that participate in the enterohepatic circulation of bile acids. Two homologous transporters are involved in the reabsorption of bile acids, one absorbing from the intestinal lumen, the bile duct, and the kidney with an apical localization (SLC10A2; MIM 601295), and the other being found in the basolateral membranes of hepatocytes (SLC10A1). [supplied by OMIM]

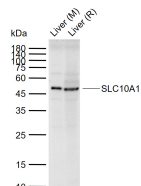
**Applications:** WB (1:500-2000)

**Reactivity:** Mouse, Rat

**Predicted MW.:** 38 kDa

**Subcellular Location:** Cell membrane

### — VALIDATION IMAGES —



Sample: Lane 1: Mouse Liver tissue lysates Lane  
2: Rat Liver tissue lysates Primary: Anti-SLC10A1  
(bs-25666R) at 1/1000 dilution Secondary:  
IRDye800CW Goat Anti-Rabbit IgG at 1/20000  
dilution Predicted band size: kDa Observed band  
size: 48 kDa