

**bsm-52812R****[ Primary Antibody ]****BioSS**  
ANTIBODIES

www.bioss.com.cn

sales@bioss.com.cn

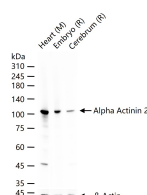
techsupport@bioss.com.cn

400-901-9800

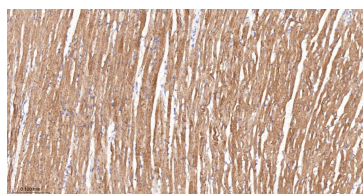
**Alpha Actinin 2 Recombinant Rabbit mAb****— DATASHEET —****Host:** Rabbit**Isotype:** IgG**Clonality:** Recombinant**CloneNo.:** 4C1**GeneID:** 88**SWISS:** P35609**Target:** Alpha Actinin 2**Purification:** affinity purified by Protein A**Concentration:** 1mg/ml**Storage:** PBS, Glycerol, BSA.

Shipped at 4°C. Store at -20°C for one year. Avoid repeated freeze/thaw cycles.

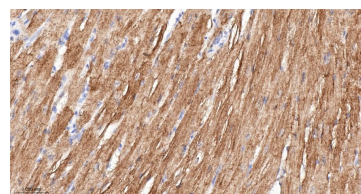
**Background:** Alpha actinins belong to the spectrin gene superfamily which represents a diverse group of cytoskeletal proteins, including the alpha and beta spectrins and dystrophins. Alpha actinin is an actin-binding protein with multiple roles in different cell types. In nonmuscle cells, the cytoskeletal isoform is found along microfilament bundles and adherens-type junctions, where it is involved in binding actin to the membrane. In contrast, skeletal, cardiac, and smooth muscle isoforms are localized to the Z-disc and analogous dense bodies, where they help anchor the myofibrillar actin filaments. This gene encodes a muscle-specific, alpha actinin isoform that is expressed in both skeletal and cardiac muscles. Several transcript variants encoding different isoforms have been found for this gene. [provided by RefSeq, May 2013]

**Applications:** WB (1:500-2000)**IHC-P** (1:50-200)**IHC-F** (1:50-200)**IF** (1:50-200)**Reactivity:** Human, Mouse, Rat**Subcellular Location:** Cytoplasm**— VALIDATION IMAGES —**

25 ug total protein per lane of various lysates (see on figure) probed with Alpha Actinin 2 monoclonal antibody, unconjugated (bsm-52812R) at 1:1000 dilution and 4°C overnight incubation. Followed by conjugated secondary antibody incubation at r.t. for 60 min.



Paraformaldehyde-fixed, paraffin embedded Rat Heart; Antigen retrieval by boiling in sodium citrate buffer (pH6.0) for 15 min; The section was incubated with Alpha Actinin 2 Monoclonal Antibody, Unconjugated (bsm-52812R) at 1:200 overnight at 4°C, followed by conjugation to the bs-0295G-HRP and DAB (C-0010) staining.



Paraformaldehyde-fixed, paraffin embedded Mouse Heart; Antigen retrieval by boiling in sodium citrate buffer (pH6.0) for 15 min; The section was incubated with Alpha Actinin 2 Monoclonal Antibody, Unconjugated (bsm-52812R) at 1:200 overnight at 4°C, followed by conjugation to the bs-0295G-HRP and DAB (C-0010) staining.