

bs-41372R**[Primary Antibody]****HES1 Rabbit pAb****BioSS**
ANTIBODIES

www.bioss.com.cn

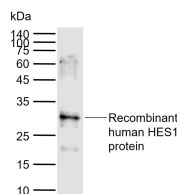
sales@bioss.com.cn

techsupport@bioss.com.cn

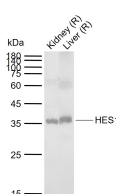
400-901-9800

— DATASHEET —

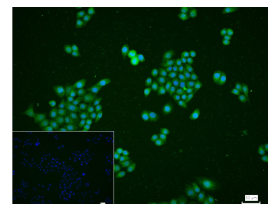
Host: Rabbit	Isotype: IgG	Applications: WB (1:500-2000) ICC/IF (1:50-1:200) ELISA (1:5000-10000) Reactivity: Human, Rat (predicted: Mouse) Predicted MW.: 30 kDa Subcellular Location: Nucleus
Clonality: Polyclonal		
GeneID: 3280	SWISS: Q14469	
Target: HES1		
Immunogen: Recombinant human HES1 protein : 1-277/280.		
Purification: affinity purified by Protein A		
Concentration: 1mg/ml		
Storage: 0.01M TBS (pH7.4) with 1% BSA, 0.02% Proclin300 and 50% Glycerol. Shipped at 4°C. Store at -20°C for one year. Avoid repeated freeze/thaw cycles.		
Background: Transcriptional repressor of genes that require a bHLH protein for their transcription. May act as a negative regulator of myogenesis by inhibiting the functions of MYOD1 and ASH1. Binds DNA on N-box motifs: 5'-CACNAG-3' with high affinity and on E-box motifs: 5'-CANNTG-3' with low affinity.		

— VALIDATION IMAGES —

Sample: Lane 1: Recombinant human HES1 protein Primary: Anti-HES1 (bs-41372R) at 1/1000 dilution Secondary: IRDye800CW Goat Anti-Rabbit IgG at 1/20000 dilution Predicted band size: 30 kDa Observed band size: 30 kDa



Sample: Lane 1: Rat Kidney tissue lysates Lane 2: Rat Liver tissue lysates Primary: Anti-HES1 (bs-41372R) at 1/1000 dilution Secondary: IRDye800CW Goat Anti-Rabbit IgG at 1/20000 dilution Predicted band size: 30 kDa Observed band size: 35 kDa



4% Paraformaldehyde-fixed MCF-7 (H) cell; Triton X-100 at r.t. for 20 min; Antibody incubation with (HES1) polyclonal Antibody, unconjugated (bs-41372R) 1:100, 90 min at 37°C; followed by conjugated Goat Anti-Rabbit IgG antibody (green, bs-40295G-FITC) at 37°C for 90 min, DAPI (blue, C02-04002) was used to stain the cell nuclei. PBS instead of the primary antibody was used as the blank control.