

bsm-52798R**[Primary Antibody]**

MMP13 Recombinant Rabbit mAb

Bioss
ANTIBODIES

www.bioss.com.cn

sales@bioss.com.cn

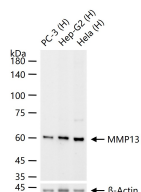
techsupport@bioss.com.cn

400-901-9800

— DATASHEET —

Host: Rabbit**Isotype:** IgG**Clonality:** Recombinant**CloneNo.:** 4C4**GeneID:** 4322**SWISS:** P45452**Target:** MMP13**Immunogen:** A synthesized peptide derived from human MMP13: 400-471.**Purification:** affinity purified by Protein A**Concentration:** 1mg/ml**Storage:** 0.01M TBS (pH7.4) with 1% BSA, 0.02% Proclin300 and 50% Glycerol.
Shipped at 4°C. Store at -20°C for one year. Avoid repeated freeze/thaw cycles.**Background:** bs-0575P is one synthetic peptide derived from human MMP13. Proteins of the matrix metalloproteinase (MMP) family are involved in the breakdown of extracellular matrix in normal physiological processes, such as embryonic development, reproduction, and tissue remodeling, as well as in disease processes, such as arthritis and metastasis. Most MMP's are secreted as inactive proproteins which are activated when cleaved by extracellular proteinases. The protein encoded by this gene cleaves type II collagen more efficiently than types I and III. It may be involved in articular cartilage turnover and cartilage pathophysiology associated with osteoarthritis. The gene is part of a cluster of MMP genes which localize to chromosome 11q22.3. [provided by RefSeq, Jul 2008].**Applications:** WB (1:500-2000)**Reactivity:** Human (predicted: Mouse)**Subcellular Location:** Secreted ,Extracellular matrix

— VALIDATION IMAGES —



25 ug total protein per lane of various lysates (see on figure) probed with MMP13 monoclonal antibody, unconjugated (bsm-52798R) at 1:1000 dilution and 4°C overnight incubation. Followed by conjugated secondary antibody incubation at r.t. for 60 min.