

bs-25363R**[Primary Antibody]****SLC10A1 Rabbit pAb****Bioss**
ANTIBODIES

www.bioss.com.cn

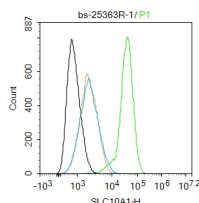
sales@bioss.com.cn

techsupport@bioss.com.cn

400-901-9800

— DATASHEET —

Host: Rabbit	Isotype: IgG	Applications: Flow-Cyt (1ug/Test)
Clonality: Polyclonal		Reactivity: Rat (predicted: Mouse)
GeneID: 20493	SWISS: O08705	
Target: SLC10A1		
Immunogen: KLH conjugated synthetic peptide derived from mouse SLC10A1: 301-362/362.		Predicted MW.: 38 kDa
Purification: affinity purified by Protein A		Subcellular Location: Cell membrane
Concentration: 1mg/ml		
Storage: 0.01M TBS (pH7.4) with 1% BSA, 0.02% Proclin300 and 50% Glycerol. Shipped at 4°C. Store at -20°C for one year. Avoid repeated freeze/thaw cycles.		
Background: Sodium/bile acid cotransporters are integral membrane glycoproteins that participate in the enterohepatic circulation of bile acids. Two homologous transporters are involved in the reabsorption of bile acids, one absorbing from the intestinal lumen, the bile duct, and the kidney with an apical localization(SLC10A2; MIM 601295), and the other being found in the basolateral membranes of hepatocytes (SLC10A1).[supplied by OMIM]		

— VALIDATION IMAGES —

Blank control:BRL-3A. Primary Antibody (green line): Rabbit Anti-SLC10A1 antibody (bs-25363R) Dilution: 1ug/Test; Secondary Antibody (white blue line) : Goat anti-rabbit IgG-AF488 Dilution: 0.5ug/Test. Isotype control (orange line) : Normal Rabbit IgG Protocol The cells were incubated in 5%BSA to block non-specific protein-protein interactions for 30 min at room temperature .Cells stained with Primary Antibody for 30 min at room temperature. The secondary antibody used for 40 min at room temperature. Acquisition of 20,000 events was performed.