

bsm-54363R**[Primary Antibody]**

www.bioss.com.cn

sales@bioss.com.cn

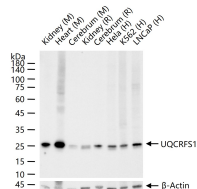
techsupport@bioss.com.cn

400-901-9800

UQCRFS1 Recombinant Rabbit mAb**— DATASHEET —****Host:** Rabbit**Isotype:** IgG**Clonality:** Recombinant**CloneNo.:** 10C1**GeneID:** 7386**SWISS:** P47985**Target:** UQCRFS1**Purification:** affinity purified by Protein A**Concentration:** 1mg/ml**Storage:** PBS, Glycerol, BSA.

Shipped at 4°C. Store at -20°C for one year. Avoid repeated freeze/thaw cycles.

Background: UQCRFS1 is an iron-sulfur Rieske protein belongs to major subunits of cytochrome b6f complex of photosynthetic membranes and is encoded by petA gene. A hydrophobic stretch next to N-terminus of the protein is considered as a transmembrane anchor for the Rieske protein. It had been shown that the Rieske protein is involved in the quinol binding. In plants it is essential protein for photoautotrophism. Confers resistance to photo-oxidative damages by contributing to the thermal dissipation of light energy and to lumenal acidification (increase of pH gradient). Component of the cytochrome b6-f complex, which mediates electron transfer between photosystem II (PSII) and photosystem I (PSI), cyclic electron flow around PSI, and state transitions.

Applications: WB (1:500-2000)**IHC-P** (1:200-1000)**IHC-F** (1:200-1000)**IF** (1:200-1000)**IP** (1:20-100)**Reactivity:** Human, Mouse, Rat**Subcellular Location:** Cell membrane ,Cytoplasm**— VALIDATION IMAGES —**

25 ug total protein per lane of various lysates (see on figure) probed with UQCRFS1 monoclonal antibody, unconjugated (bsm-54363R) at 1:1000 dilution and 4°C overnight incubation. Followed by conjugated secondary antibody incubation at r.t. for 60 min.