

bs-25447R**[Primary Antibody]****phospho-MLKL (Ser345) Rabbit pAb****BioSS**
ANTIBODIES

www.bioss.com.cn

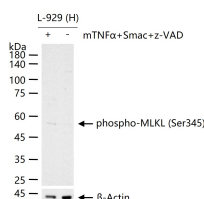
sales@bioss.com.cn

techsupport@bioss.com.cn

400-901-9800

— DATASHEET —

Host: Rabbit	Isotype: IgG	Applications: WB (1:500-2000)
Clonality: Polyclonal		Reactivity: Human (predicted: Mouse)
GeneID: 74568	SWISS: Q9D2Y4	
Target: MLKL (Ser345)		
Purification: affinity purified by Protein A		Subcellular Location: Cell membrane ,Cytoplasm
Concentration: 1mg/ml		
Storage: 0.01M TBS (pH7.4) with 1% BSA, 0.02% Proclin300 and 50% Glycerol. Shipped at 4°C. Store at -20°C for one year. Avoid repeated freeze/thaw cycles.		
Background: This gene belongs to the protein kinase superfamily. The encoded protein contains a protein kinase-like domain; however, is thought to be inactive because it lacks several residues required for activity. This protein plays a critical role in tumor necrosis factor (TNF)-induced necroptosis, a programmed cell death process, via interaction with receptor-interacting protein 3 (RIP3), which is a key signaling molecule in necroptosis pathway. Inhibitor studies and knockdown of this gene inhibited TNF-induced necrosis. High levels of this protein and RIP3 are associated with inflammatory bowel disease in children. Alternatively spliced transcript variants have been described for this gene. [provided by RefSeq, Sep 2015].		

— VALIDATION IMAGES —

L-929 (H) cells were treated with or without mTNF alpha (20 ng/ml) Smac mimetic (100 nM) and z-VAD (20 μM) for 8 h, 25 μg total protein per lane of cell lysates (see on figure) probed with phospho-MLKL (Ser345) polyclonal antibody, unconjugated (bs-25447R) at 1:500 dilution and 4°C overnight incubation. Followed by conjugated secondary antibody incubation at r.t. for 60 min.