

Spindlin 1 Rabbit pAb

Catalog Number: bs-0724R

Target Protein: Spindlin 1

Concentration: 1mg/ml

Form: Liquid

Host: Rabbit

Clonality: Polyclonal

Isotype: IgG

Applications: IHC-P (1:100-500), IHC-F (1:100-500), IF (1:100-500)

Reactivity: Human (predicted:Mouse, Rat)

Predicted MW: 29 kDa

Entrez Gene: 10927

Swiss Prot: Q9Y657

Source: KLH conjugated synthetic peptide derived from human Spindlin 1: 3-100/237.

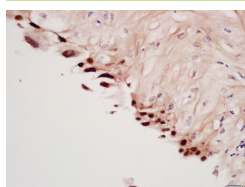
Purification: affinity purified by Protein A

Storage: 0.01M TBS (pH7.4) with 1% BSA, 0.02% Proclin300 and 50% Glycerol.

Shipped at 4°C. Store at -20°C for one year. Avoid repeated freeze/thaw cycles.

Background: Spindlin 1 (Spindlin-like protein 2; SPIN-2) protein May play a role in cell-cycle regulation during the transition from gamete to embryo. Subcellular location in the Nucleus. Belongs to the SPIN/STSY family.

VALIDATION IMAGES



Tissue/cell: Human Cervical Cancer tissue; 4% Paraformaldehyde-fixed and paraffin-embedded; Antigen retrieval: citrate buffer (0.01M, pH 6.0), Boiling bathing for 15min; Block endogenous peroxidase by 3% Hydrogen peroxide for 30min; Blocking buffer (normal goat serum,C-0005) at 37°C for 20 min; Incubation: Anti-Spindlin 1 Polyclonal Antibody, Unconjugated(bs-0724R) 1:200, overnight at 4°C, followed by conjugation to the secondary antibody(SP-0023) and DAB(C-0010) staining