

LOX Recombinant Rabbit mAb

Catalog Number: bsm-60440R

Target Protein: LOX

Concentration: 1mg/ml

Form: Liquid

Host: Rabbit

Clonality: Recombinant

Clone No.: A6E3

Isotype: IgG/Kappa

Applications: WB (1:500-1:1000), ICC/IF (1:50-1:200)

Reactivity: Human (predicted:Mouse)

Subcellular Secreted ,Extracellular matrix

Locations:

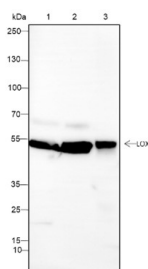
Purification: affinity purified by Protein A

Storage: 0.01M TBS (pH7.4) with 1% BSA, 0.02% Proclin300 and 50% Glycerol.

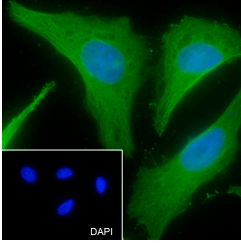
Shipped at 4°C. Store at -20°C for one year. Avoid repeated freeze/thaw cycles.

Background: This gene encodes a member of the lysyl oxidase family of proteins. Alternative splicing results in multiple transcript variants, at least one of which encodes a preproprotein that is proteolytically processed to generate a regulatory propeptide and the mature enzyme. The copper-dependent amine oxidase activity of this enzyme functions in the crosslinking of collagens and elastin, while the propeptide may play a role in tumor suppression. In addition, defects in this gene have been linked with predisposition to thoracic aortic aneurysms and dissections. [provided by RefSeq, Jul 2016]

VALIDATION IMAGES



Blocking buffer: 5% NFDM/TBST Primary Ab dilution: 1:1000 Primary Ab incubation condition: 4°C overnight
Secondary Ab: Goat Anti-Rabbit IgG H&L (HRP) Lysate: 1: HeLa, 2: Jurkat, 3: C2C12 Protein loading quantity:
20 µg Exposure time: 10 s Predicted MW: 56 kDa Observed MW: 54 kDa



Cell line: HeLa Fixative: 4% Paraformaldehyde Permeabilization: 0.1% TritonX-100 Primary Ab dilution: 1:200
Primary incubation condition: 4°C overnight Secondary Ab: Goat Anti-Rabbit IgG Nuclear counter stain: DAPI
(Blue) Comment: Color green is the positive signal for bsm-60440R