

bsm-60464M**[Primary Antibody]****MTHFD1 Recombinant Mouse mAb****BioSS**
ANTIBODIES

www.bioss.com.cn

sales@bioss.com.cn

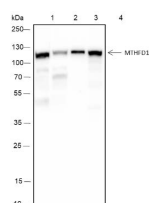
techsupport@bioss.com.cn

400-901-9800

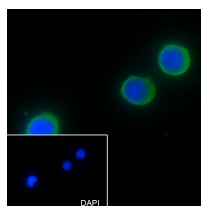
— DATASHEET —**Host:** Mouse**Isotype:** IgG1, Kappa**Clonality:** Recombinant**CloneNo.:** F9D9**Target:** MTHFD1**Purification:** affinity purified by Protein G**Concentration:** 1mg/ml**Storage:** PBS, Glycerol, BSA.

Shipped at 4°C. Store at -20°C for one year. Avoid repeated freeze/thaw cycles.

Background: This gene encodes a protein that possesses three distinct enzymatic activities, 5,10-methylenetetrahydrofolate dehydrogenase, 5,10-methenyltetrahydrofolate cyclohydrolase and 10-formyltetrahydrofolate synthetase. Each of these activities catalyzes one of three sequential reactions in the interconversion of 1-carbon derivatives of tetrahydrofolate, which are substrates for methionine, thymidylate, and de novo purine syntheses. The trifunctional enzymatic activities are conferred by two major domains, an aminoterminal portion containing the dehydrogenase and cyclohydrolase activities and a larger synthetase domain. [provided by RefSeq, Jul 2008]

Applications: WB (1:500-1:1000)**ICC/IF** (1:50)**Reactivity:** Human (predicted: Mouse)**Predicted
MW.:** 110 kDa**Subcellular
Location:** Cytoplasm**— VALIDATION IMAGES —**

Blocking buffer: 5% NFDm/TBST Primary Ab
dilution: 1:1000 Primary Ab incubation
condition: room temperature 2h Secondary Ab:
Goat Anti-Mouse IgG H&L (HRP) Lysate: 1: HeLa,
2: 293, 3: A20, 4: Raw264.7 Protein loading
quantity: 20 µg Exposure time: 10 s Predicted
MW: 102 kDa Observed MW: 102 kDa



Cell line: HEK-293 Fixative: 100% Ice-cold
methanol Permeabilization: 0.1% TritonX-100
Primary Ab dilution: 1:50 Primary incubation
condition: 4°C overnight Secondary Ab: Goat
Anti-Rabbit IgG Nuclear counter stain: DAPI
(Blue) Comment: Color green is the positive
signal for bsm-60464M