

bs-25424R**[Primary Antibody]**

www.bioss.com.cn

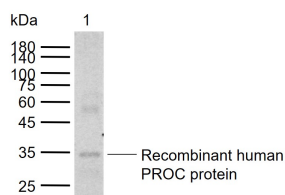
sales@bioss.com.cn

techsupport@bioss.com.cn

400-901-9800

Protein C tag Rabbit pAb**— DATASHEET —**

Host: Rabbit	Isotype: IgG	Applications: WB (1:500-2000) ELISA (1:1000-5000)
Clonality: Polyclonal		Reactivity: Human (predicted: tag)
Target: Protein C tag		
Purification: affinity purified by Protein A		
Concentration: 1mg/ml		Subcellular Location: Secreted
Storage: 0.01M TBS (pH7.4) with 1% BSA, 0.02% Proclin300 and 50% Glycerol. Shipped at 4°C. Store at -20°C for one year. Avoid repeated freeze/thaw cycles.		
Background: Protein C is a Vitamin K-dependent plasma zymogen that is activated by proteolytic cleavage of the thrombin-thrombomodulin complex to form an anticoagulant enzyme. Protein C Tag is a 12 amino acid sequence EDQVDPRLIDGK, which encodes residues 6 through 17 of the heavy chain of the protein. Protein C Tag Antibody is a useful tool in analysis of Protein C fusion proteins.		

— VALIDATION IMAGES —

Sample: Lane 1: Recombinant human PROC protein, N-His(bs-42184P) Primary: Anti-Protein C tag (bs-25424R) at 1/500 dilution Secondary: IRDye800CW Goat Anti-Rabbit IgG at 1/20000 dilution Predicted band size: kDa Observed band size: 34 kDa