

**bs-25638R**

**[ Primary Antibody ]**

## DPY19L2 Rabbit pAb

**Bioss**  
ANTIBODIES

www.bioss.com.cn

sales@bioss.com.cn

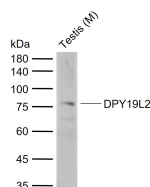
techsupport@bioss.com.cn

400-901-9800

### — DATASHEET —

<b>Host:</b> Rabbit	<b>Isotype:</b> IgG	<b>Applications:</b> WB (1:500-2000)
<b>Clonality:</b> Polyclonal		<b>Reactivity:</b> Mouse (predicted: Human, Rat, Rabbit, Pig, Cow, Dog, Horse)
<b>Target:</b> DPY19L2		<b>Predicted MW.:</b> 87 kDa
<b>Immunogen:</b> KLH conjugated synthetic peptide derived from mouse DPY19L2: 671-770/773.		<b>Subcellular Location:</b> Cell membrane
<b>Purification:</b> affinity purified by Protein A		
<b>Concentration:</b> 1mg/ml		
<b>Storage:</b> 0.01M TBS (pH7.4) with 1% BSA, 0.02% Proclin300 and 50% Glycerol. Shipped at 4°C. Store at -20°C for one year. Avoid repeated freeze/thaw cycles.		
<b>Background:</b> The protein encoded by this gene belongs to the dpy-19 family. It is highly expressed in testis, and is required for sperm head elongation and acrosome formation during spermatogenesis. Mutations in this gene are associated with an infertility disorder, spermatogenic failure type 9 (SPGF9). [provided by RefSeq, Dec 2011]		

### — VALIDATION IMAGES —



Sample: Lane 1: Mouse Testis tissue lysates  
Primary: Anti-DPY19L2 (bs-25638R) at 1/1000  
dilution Secondary: IRDye800CW Goat Anti-  
Rabbit IgG at 1/20000 dilution Predicted band  
size: 87 kDa Observed band size: 77 kDa