

bs-25622R**[Primary Antibody]****GBP2 Rabbit pAb****Bioss**
ANTIBODIES

www.bioss.com.cn

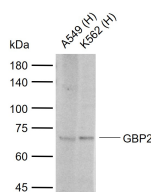
sales@bioss.com.cn

techsupport@bioss.com.cn

400-901-9800

— DATASHEET —

Host: Rabbit	Isotype: IgG	Applications: WB (1:500-2000)
Clonality: Polyclonal		Reactivity: Human (predicted: Rabbit, Pig, Cow, Horse)
GeneID: 2634	SWISS: P32456	
Target: GBP2		Predicted MW.: 67 kDa
Immunogen: KLH conjugated synthetic peptide derived from human GBP2: 51-150/591.		Subcellular Location: Cell membrane ,Cytoplasm ,Nucleus
Purification: affinity purified by Protein A		
Concentration: 1mg/ml		
Storage: 0.01M TBS (pH7.4) with 1% BSA, 0.02% Proclin300 and 50% Glycerol. Shipped at 4°C. Store at -20°C for one year. Avoid repeated freeze/thaw cycles.		
Background: This gene belongs to the guanine-binding protein (GBP) family, which includes interferon-induced proteins that can bind to guanine nucleotides (GMP, GDP and GTP). The encoded protein is a GTPase which hydrolyzes GTP, predominantly to GDP. The protein may play a role as a marker of squamous cell carcinomas. [provided by RefSeq, Jul 2013]		

— VALIDATION IMAGES —

Sample: Lane 1: Human A549 cell lysates Lane 2: Human K562 cell lysates Primary: Anti-GBP2 (bs-25622R) at 1/1000 dilution Secondary: IRDye800CW Goat Anti-Rabbit IgG at 1/20000 dilution Predicted band size: 67 kDa Observed band size: 67 kDa