
PTH2R Rabbit pAb

Catalog Number: bs-24129R

Target Protein: PTH2R

Concentration: 1mg/ml

Form: Liquid

Host: Rabbit

Clonality: Polyclonal

Isotype: IgG

Applications: WB (1:500-2000)

Reactivity: Mouse, Rat (predicted:Sheep, Cow)

Predicted MW: 60 kDa

Entrez Gene: 213527

Swiss Prot: Q91V95

Source: KLH conjugated synthetic peptide derived from mouse PTH2R: 81-180/550.

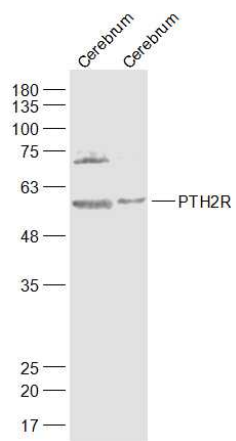
Purification: affinity purified by Protein A

Storage: 0.01M TBS (pH7.4) with 1% BSA, 0.02% Proclin300 and 50% Glycerol.

Shipped at 4°C. Store at -20°C for one year. Avoid repeated freeze/thaw cycles.

Background: The protein encoded by this gene is a member of the G-protein coupled receptor 2 family. This protein is a receptor for parathyroid hormone (PTH). This receptor is more selective in ligand recognition and has a more specific tissue distribution compared to parathyroid hormone receptor 1 (PTH1R). It is activated only by PTH and not by parathyroid hormone-like hormone (PTHrP) and is particularly abundant in brain and pancreas. Alternative splicing results in multiple transcript variants. [provided by RefSeq, Jan 2013]

VALIDATION IMAGES



Sample: Cerebrum (Mouse) Lysate at 40 ug Cerebrum (Rat) Lysate at 40 ug Primary: Anti-PTH2R(bs-24129R) at 1/1000 dilution Secondary: IRDye800CW Goat Anti-Rabbit IgG at 1/20000 dilution Predicted band size: 60 kD Observed band size: 60 kD