

bs-7918R

[Primary Antibody]

PLK5 Rabbit pAb

Bioss
ANTIBODIES

www.bioss.com.cn

sales@bioss.com.cn

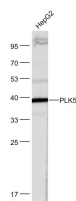
techsupport@bioss.com.cn

400-901-9800

— DATASHEET —

Host: Rabbit	Isotype: IgG	Applications: WB (1:500-2000)
Clonality: Polyclonal		Reactivity: Human (predicted: Mouse, Rat, Pig, Sheep, Dog)
GeneID: 126520		
Target: PLK5		Predicted MW.: 36 kDa
Immunogen: KLH conjugated synthetic peptide derived from human PLK5: 191-280/336.		Subcellular Location: Cytoplasm ,Nucleus
Purification: affinity purified by Protein A		
Concentration: 1mg/ml		
Storage: 0.01M TBS (pH7.4) with 1% BSA, 0.02% Proclin300 and 50% Glycerol. Shipped at 4°C. Store at -20°C for one year. Avoid repeated freeze/thaw cycles.		
Background: PLK5 (Serine/threonine-protein kinase PLK5) belongs to the protein kinase superfamily and Ser/Thr protein kinase family and CDC5/Polo subfamily. PLK5P contains 1 POLO box domain and 1 Serine/Threonine protein kinase catalytic domain.		

— VALIDATION IMAGES —



Sample: HepG2(Human) Cell Lysate at 30 ug
Primary: Anti-PLK5 (bs-7918R) at 1/1000 dilution
Secondary: IRDye800CW Goat Anti-Rabbit IgG at 1/20000 dilution Predicted band size: 36 kD
Observed band size: 38 kD