

bs-8360R**[Primary Antibody]****LRRC2 Rabbit pAb****BioSS**
ANTIBODIES

www.bioss.com.cn

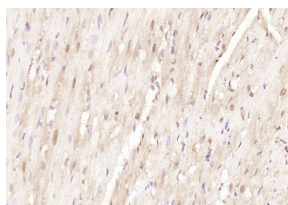
sales@bioss.com.cn

techsupport@bioss.com.cn

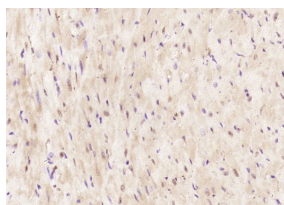
400-901-9800

— DATASHEET —

Host: Rabbit Clonality: Polyclonal GeneID: 79442 Target: LRRC2 Immunogen: KLH conjugated synthetic peptide derived from human LRRC2: 1-100/371. Purification: affinity purified by Protein A Concentration: 1mg/ml Storage: 0.01M TBS (pH7.4) with 1% BSA, 0.02% Proclin300 and 50% Glycerol. Shipped at 4°C. Store at -20°C for one year. Avoid repeated freeze/thaw cycles. Background: The leucine-rich repeat-containing protein 2 (LRRC2) is a 371 amino acid protein that contains 9 LRR repeats. The gene encoding LRRC2 maps to chromosome 3, which encodes over 1,100 genes. Particular regions of the chromosome 3 short arm are deleted in many types of cancer cells. Marfan Syndrome, porphyria, von Hippel-Lindau syndrome, osteogenesis imperfecta and Charcot-Marie-Tooth Disease are a few of the numerous genetic diseases associated with chromosome 3.	Isotype: IgG SWISS: Q9BYS8	Applications: IHC-P (1:100-500) IHC-F (1:100-500) IF (1:50-200) Reactivity: Mouse, Rat (predicted: Human, Pig, Sheep, Cow, Dog, Horse) Predicted MW.: 43 kDa Subcellular Location: Secreted ,Extracellular matrix ,Cytoplasm ,Nucleus
--	---	--

— VALIDATION IMAGES —

Paraformaldehyde-fixed, paraffin embedded (rat heart); Antigen retrieval by boiling in sodium citrate buffer (pH6.0) for 15min; Block endogenous peroxidase by 3% hydrogen peroxide for 20 minutes; Blocking buffer (normal goat serum) at 37°C for 30min; Antibody incubation with (LRRC2) Polyclonal Antibody, Unconjugated (bs-8360R) at 1:200 overnight at 4°C, followed by operating according to SP Kit(Rabbit) (sp-0023) instructions and DAB staining.



Paraformaldehyde-fixed, paraffin embedded (mouse heart); Antigen retrieval by boiling in sodium citrate buffer (pH6.0) for 15min; Block endogenous peroxidase by 3% hydrogen peroxide for 20 minutes; Blocking buffer (normal goat serum) at 37°C for 30min; Antibody incubation with (LRRC2) Polyclonal Antibody, Unconjugated (bs-8360R) at 1:200 overnight at 4°C, followed by operating according to SP Kit(Rabbit) (sp-0023) instructions and DAB staining.