

**bsm-60771R****[ Primary Antibody ]****BioSS**  
ANTIBODIES

www.bioss.com.cn

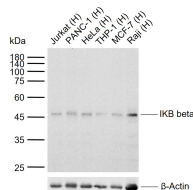
sales@bioss.com.cn

techsupport@bioss.com.cn

400-901-9800

**IKB beta Recombinant Rabbit mAb****— DATASHEET —**

<b>Host:</b> Rabbit	<b>Isotype:</b> IgG	<b>Applications:</b> WB (1:500-1000)  <b>Reactivity:</b> Human (predicted: Mouse)  <b>Predicted MW.:</b> 38 kDa  <b>Subcellular Location:</b> Cytoplasm ,Nucleus
<b>Clonality:</b> Recombinant	<b>CloneNo.:</b> 18E7	
<b>GeneID:</b> 4793	<b>SWISS:</b> Q15653	
<b>Target:</b> IKB beta		
<b>Purification:</b> affinity purified by Protein A		
<b>Concentration:</b> 1mg/ml		
<b>Storage:</b> PBS, Glycerol, BSA. Shipped at 4°C. Store at -20°C for one year. Avoid repeated freeze/thaw cycles.		
<b>Background:</b> The protein encoded by this gene belongs to the NF-kappa-B inhibitor family, which inhibit NF-kappa-B by complexing with, and trapping it in the cytoplasm. Phosphorylation of serine residues on these proteins by kinases marks them for destruction via the ubiquitination pathway, thereby allowing activation of the NF-kappa-B, which translocates to the nucleus to function as a transcription factor. Alternatively spliced transcript variants have been found for this gene.[provided by RefSeq, Jul 2011].		

**— VALIDATION IMAGES —**

Sample: Lane 1: Human Jurkat cell lysates Lane 2: Human PANC-1 cell lysates Lane 3: Human HeLa cell lysates Lane 4: Human THP-1 cell lysates Lane 5: Human MCF-7 cell lysates Lane 6: Human Raji cell lysates  
 Primary: Anti-IKB beta (bsm-60771R) at 1/1000 dilution Secondary: IRDye800CW Goat Anti-Rabbit IgG at 1/20000 dilution  
 Predicted band size: 38 kDa Observed band size: 46 kDa