

**bsm-60770R****[ Primary Antibody ]****BioSS**  
ANTIBODIES

www.bioss.com.cn

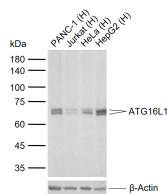
sales@bioss.com.cn

techsupport@bioss.com.cn

400-901-9800

**ATG16L1 Recombinant Rabbit mAb****— DATASHEET —**

<b>Host:</b> Rabbit	<b>Isotype:</b> IgG	<b>Applications:</b> WB (1:500-1000)  <b>Reactivity:</b> Human   <b>Predicted MW.:</b> 68 kDa  <b>Subcellular Location:</b> Cytoplasm
<b>Clonality:</b> Recombinant	<b>CloneNo.:</b> 11E1	
<b>GeneID:</b> 55054	<b>SWISS:</b> Q676U5	
<b>Target:</b> ATG16L1		
<b>Purification:</b> affinity purified by Protein A		
<b>Concentration:</b> 1mg/ml		
<b>Storage:</b> 50mM Tris-Glycine (pH7.4), 0.15M NaCl, 40% Glycerol, 0.02% Proclin300 and 0.05% BSA. Shipped at 4°C. Store at -20°C for one year. Avoid repeated freeze/thaw cycles.		
<b>Background:</b> The protein encoded by this gene is part of a large protein complex that is necessary for autophagy, the major process by which intracellular components are targeted to lysosomes for degradation. Defects in this gene are a cause of susceptibility to inflammatory bowel disease type 10 (IBD10). Several transcript variants encoding different isoforms have been found for this gene.[provided by RefSeq, Jun 2010]		

**— VALIDATION IMAGES —**

Sample: Lane 1: Human PANC-1 cell lysates Lane 2: Human Jurkat cell lysates Lane 3: Human HeLa cell lysates Lane 4: Human HepG2 cell lysates  
Primary: Anti-ATG16L1 (bsm-60770R) at 1/1000 dilution  
Secondary: IRDye800CW Goat Anti-Mouse IgG at 1/20000 dilution  
Predicted band size: 68 kDa  
Observed band size: 66,68 kDa