
Recombinant mouse ESM1 protein, C-His

Catalog Number: bs-43573P

Concentration: >0.5mg/ml

Species: Human

AA Seq: 22-184/184

Predicted MW: 18.8

Tags: C-His

Endotoxin: Not analyzed

Purity: >0.5 mg/ml

Purification: AC

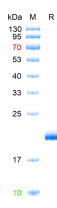
Form: Lyophilized or Liquid

Storage: PBS (pH7.4).

Stored at -70°C or -20°C. Avoid repeated freeze/thaw cycles.

Background: ESM1 is a secreted dermatan sulfate proteoglycan which is predominantly expressed in the endothelial cells in human lung and kidney tissues. Expression of ESM1 is regulated by cytokines. ESM1 may have a role in lung endothelial cell-leukocyte interactions. The transcript contains multiple polyadenylation and mRNA instability signals. Two transcript variants encoding different isoforms have been found for this gene.

VALIDATION IMAGES



The purity of the protein is greater than 90% as determined by reducing SDS-PAGE.